

# Tire & Wheel Service

Lubricants | Markers | Tire Branders | Bead Breakers  
Bead Seating Devices | Hydraulic Rams | Pumps  
OTR Service Tools | Tire Irons | Hammers & Wedges  
Wrenches & Lug Wrenches | Tire Changers  
Inflation Systems | Safety Inflation Cages



# TIRE PROFESSIONALS INSIST ON



[www.ameintl.net](http://www.ameintl.net)



**BEADBAZOOKA**  
TOMMY GUN



BB9LM



BB6LM

**NEW**

**Perfect For**

- Small Passenger
- Lawn and Garden
- ATV



BB3LM



**Air Bottle Jacks**

Our line of premium quality 20 Ton air & air/manual bottle jacks feature aluminum air motors, specially heat treated cylinder walls, and chrome pistons. This ensures that each unit delivers maximum performance, durability, and safety.

Y432020





# Tire Lubricants & Sealants

## ASCOT TIRE AND TUBE MOUNTING COMPOUND

- Makes tire mounting and dismounting faster and easier
- Now with rust inhibitor
- Approved by major rubber companies
- Lubricates all rubber parts, stops rubber squeaks



432-02029

432-02028

ASCOT NO.	MFG. NO.	DESCRIPTION
432-02012	2012	Tire/Tube Mounting Compound, 125 Lbs. Drum
432-02014	2014	Tire/Tube Mounting Compound, 445 Lbs. Drum
432-02028	2028	Tire/Tube Mounting Compound, 8 Lbs. Pail
432-02029	2029	Tire/Tube Mounting Compound, 25 Lbs. Pail
432-02035	2035	Tire/Tube Mounting Compound, 40 Lbs. Pail

## BLACK RIM RUST RETARDANT & TIRE LUBE

- Makes tire mounting and dismounting faster and easier
- Now with rust inhibitor
- Approved by major rubber companies
- Lubricates all rubber parts, stops rubber squeaks



435-06001

435-06002

435-07002

435-08002

ASCOT NO.	MFG. NO.	DESCRIPTION
435-06001	065-2539	Black Rim Rust Retardant Tire Lube, 6 - 5 Lbs.
435-06008	048-2539	Black Rim Rust Retardant Tire Lube, 4 - 8 Lbs.
435-06002	025-2539	Black Rim Rust Retardant Tire Lube, 25 Lbs.
435-06003	040-2539	Black Rim Rust Retardant Tire Lube, 40 Lbs.
435-06004	120-2539	Black Rim Rust Retardant Tire Lube, 120 Lbs.
435-07001	041-2541	Tire Mounting & Rubber Lubricant, 4 Gal.
435-07002	005-2541	Tire Mounting & Rubber Lubricant, 5 Gal.
435-08001	048-2540	Tire Mounting & Rubber Lubricant Paste, 8 Lbs.
435-08002	025-2540	Tire Mounting & Rubber Lubricant Paste, 25 Lbs.
435-08003	040-2540	Tire Mounting & Rubber Lubricant Paste, 40 Lbs.

## MISCELLANEOUS TIRE SWABS AND BRUSHES



437-00001

437-00002

437-00003

437-40006

437-13014

ASCOT NO.	MFG. NO.	DESCRIPTION
437-00001	TS-1	Tire Swab - 11" OAL X 2" Diameter
437-00002	TS-2	Tire Swab - 15" OAL X 2" Diameter
437-00003	TS-3	Tire Swab - 18" OAL X 3" Diameter
437-40006	40006	Tire Lubricating Brush
437-13014	313014	Hunter-Style Tire Lubricating Brush

➔ Mounting Paste & Lubricant, Mounting/Packing Compound, No Rim Rust

**MURPHY'S NON-RUST RIM-KOTE**

- Acts as tire mounting lubricant - prevents tire bead "freezing"
- Contains no petroleum - prevents rim rust and scale
- Great for seating tubeless bias, belted and radial tires
- **APPLICATIONS:** Recommended for mounting tires on heavy duty trucks, buses and off-the-road vehicles



434-02120

ASCOT NO.	MFG. NO.	DESCRIPTION
434-02020	2020	Liquid-Lube, 1-Gallon
434-02105	2105	Non-Rust Rim-Kote, 7 Lbs. Can
434-02110	2110	Non-Rust Rim-Kote, 25 Lbs. Pail
434-02120	2120	Non-Rust Rim-Kote, 40 Lbs. Pail

**MURPHY'S WHITE TIRE MOUNTING EURO PASTE**

- Designed for alloy wheels, low profile and run flat tires
- No water, no mixing
- Use right from the container
- Extra slippery to help mount tires with stiff beads
- Contains rust inhibitor to help fight rim rust
- Apply with a brush under harsh weather conditions
- Stable, ready-to-use paste
- Contains no petroleum
- Will not cause softening of rubber materials



432-02167

ASCOT NO.	MFG. NO.	DESCRIPTION
432-02167	2167	8 Lb. Pail (Low Profile)

**MURPHY'S CONCENTRATED EXTRA SLIPPERY LIQUID LUBRICANT**

- A concentrated liquid made from the finest raw materials available
- Contains improved super lubricity polymers
- **ECONOMICAL:** Dilutes 2 to 1
- Rust inhibitor added to help fight rim rust
- Formulated for super fast mounting of passenger tires



433-01950

ASCOT NO.	MFG. NO.	DESCRIPTION
433-01950	1950	1-Gallon (4 per Case)
433-01957	1957	5-Gallon Pail
433-01958	1958	55-Gallon Drum

**NO RIM RUST**

- Protects tires. Tire bead won't fuse to rim
- Helps prevent corrosion on rims and rigs
- Helps you comply with OSHA Regulation 3086

ASCOT NO.	MFG. NO.	DESCRIPTION
435-00015	FL4-1	No Rim Rust, 4-1/2 Lbs. Pail
435-00125	FL25-1	No Rim Rust, 25 Lbs. Pail
435-01120	FL120-1	No Rim Rust, 120 Lbs. Drum



435-00125



**UNIVERSAL MOUNTING PASTE**

- Makes mounting and demounting tires easier and faster and helps alleviate stress on and damage to the bead area of tires
- Tire mounting paste applies with a sponge and will not corrode or discolor aluminum or alloy wheels, won't freeze or harden
- Rubber Lubricant is a liquid concentrate that makes one gallon of rust-inhibiting water-based mounting lubricant



432-00751



437-00730

432-00740

432-00750

432-01750

ASCOT NO.	MFG. NO.	DESCRIPTION	QTY./BOX
432-00730	73	Mounting Paste Brush for Car/Light Truck	1
432-00731	73T	Mounting Paste Brush for Trucks	1
432-00740	74	Universal Mounting Paste, 22 Lbs.	1
432-00750	75	High Profile Universal Mounting Paste, 7.7 Lbs.	1
432-01750	75N	Low Profile Universal Mounting Paste, 7.7 Lbs.	1
432-00751	75B	Bracket For Mounting Paste	1
437-00001	TS-1	Swab - 11" OAL x 2" Diameter	1
437-00002	TS-2	Swab - 15" OAL x 2" Diameter	1
437-00003	TS-3	Swab - 18" OAL x 3" Diameter	2

**OTR MOUNTING/PACKING COMPOUND**

- Extra thick for Superior Bead Packing on OTR tires
- Makes OTR Tire Mounting Faster and Easier
- Will not separate or liquefy



432-12490

ASCOT NO.	MFG. NO.	DESCRIPTION
432-12490	2490	OTR Mounting/Packing Compound, 25 Lbs.
432-12492	2492	OTR Mounting/Packing Compound, 40 Lbs.

TIRE & WHEEL SERVICE // TIRE SERVICE SUPPLIES



➔ Mounting Liquid Lube & Compound, Black-Ice Stop Rust Rim Release

## Tire Lubricants & Sealants (cont.)

### TIRE MOUNTING COMPOUNDS

- **Excellent Lubrication** ▪ Will not separate or liquefy ▪ Superior for tire bead packing
- Concentrated; water soluble, can be diluted



432-12180

432-12280

ASCOT NO.	MFG. NO.	DESCRIPTION
432-12178	2178	Tire Mounting Compound (Honey Color), 8 Lbs. (4 per Case)
432-12180	2180X	Tire Mounting Compound (Honey Color), 25 Lbs.
432-12183	2183	Tire Mounting Compound (Honey Color), 40 Lbs.
432-12012	2012	Tire Mounting Compound (Honey Color), 125 Lbs.
432-12014	2014	Tire Mounting Compound (Honey Color), 55 Gal.
432-12278	2278	Tire Mounting Compound (Brown Color), 8 Lbs. (4 per Case)
432-12280	2280	Tire Mounting Compound (Brown Color), 25 Lbs.
432-12282	2282	Tire Mounting Compound (Brown Color), 40 Lbs.
432-12214	2214	Tire Mounting Compound (Brown Color), 55 Gal.

### LIQUID LUBE BLUE TIRE MOUNTING LIQUID

- **Excellent Lubrication** ▪ **Superior "Tack" and Bead Sealing qualities**
- Reduces tire/rim slippage
- Concentrated; water soluble, can be diluted ▪ Near neutral pH factor



433-81505

433-81511

433-81515

ASCOT NO.	MFG. NO.	DESCRIPTION
433-81505	81505	Liquid Lube Blue Tire Mounting Liquid, 2 Gal. (5 Gal. Mixing Pail)
433-81511	81511	Liquid Lube Blue Tire Mounting Liquid, 1 Gal. (4 per Case)
433-81515	81515	Liquid Lube Blue Tire Mounting Liquid, 5 Gal.
433-81555	81555	Liquid Lube Blue Tire Mounting Liquid, 55 Gal.

### BEAD BUTTER BLUE TIRE MOUNTING LIQUID LUBE

- **Excellent Lubrication**
- No Residue
- Concentrated; water soluble, can be diluted



433-02054

433-02053

ASCOT NO.	MFG. NO.	DESCRIPTION
433-02053	2053B	Bead Butter Blue Tire Mounting Liquid Lube, 1 Gal. (4 per Case)
433-02054	2054B	Bead Butter Blue Tire Mounting Liquid Lube, 5 Gal.
433-02055	2055B	Bead Butter Blue Tire Mounting Liquid Lube, 55 Gal.

### BLACK-ICE STOP RUST RIM RELEASE

- **Lubricates rim and tire for easy mounting & demounting** ▪ Protects against rust & corrosion
- Prevents rim and bead from bonding



435-02480

ASCOT NO.	MFG. NO.	DESCRIPTION
435-02480	2480	Black-Ice Stop Rust Rim Release, 25 Lbs. Pail



➔ Prema Tire Repair Cabinets, Light Truck Kit, Standard Truck Kit

**SURE SHOT PRESSURE SPRAYERS**

- Air pressurized and refillable
- Environmentally safe, eliminates aerosol usage
- For brake and parts cleaner, penetrating oils, lubricants, degreasers, solvents
- **MADE IN USA**



632-01002

ASCOT NO.	MFG. NO.	DESCRIPTION
632-00005	K-5	Partial Repair Kit for Model A Sure Shot Sprayers
632-00010	K-10	Complete Repair Kit for Model A Sure Shot Sprayers
632-01002	A1002	Sure Shot Black Enameled Steel Sprayer w/ Adjustable Nozzle
632-10001	A1000R	Sure Shot Enameled Steel Sprayer - Red

**ANODIZED ALUMINUM SPRAYER**

- Adjustable pistol-grip nozzle
- Features a chemical resistant anodized finish
- Will work with water, solvent & oil-based materials
- Replaces Model "A" plated brass sprayers
- 24 oz. capacity
- **MAX PRESSURE: 200 PSI**
- **MADE IN USA**



632-02400

ASCOT NO.	MFG. NO.	DESCRIPTION
632-02400	M2400S	Anodized Aluminum Sprayer

**SPRAY BOTTLE**



632-00922

ASCOT NO.	MFG. NO.	DESCRIPTION
632-00922	TS-922	16 Oz. Poly Trigger Sprayer

**INDUSTRIAL SPRAY BOTTLE - QUART SIZE**

- Industrial sprayer for use with light oils, solvents, and detergents
- The durable polyethylene bottle is impervious to high and low temperatures
- The trigger mechanism is resistant to damage caused by caustic materials



632-00923

ASCOT NO.	MFG. NO.	DESCRIPTION
632-00923	3210B32	Industrial Spray Bottle - 32 Oz. Capacity

**EZ CHECK LEAK DETECTOR**

- Finds leaks in all tires
- Environmentally friendly
- Excellent foam formation
- Skin friendly
- Commercial use only



455-25430

455-25431

ASCOT NO.	MFG. NO.	DESCRIPTION
433-25430	2543	Ascot EZ Check Leak Detector, Quart (12 per case)
433-25431	2543-1G	Ascot EZ Check Leak Detector, Gallon (4 per case)

TIRE & WHEEL SERVICE // TIRE SERVICE SUPPLIES

→ Penetrants, Air Leak Detector, EcoSeal, Tire Sealant

## Tire Lubricants & Sealants (cont.)

### PENETRANTS/AIR LEAK DETECTOR

▪ PB Blaster quickly breaks loose the surface tension of frozen parts and protects against further corrosion



433-35805



408-00016

ASCOT NO.	MFG. NO.	DESCRIPTION
328-05001	022-1071	Ultra Pen Lube 2000 Penetrant Lubricant, 1- 22 Oz.
328-05003	001-1071	Ultra Pen Lube 2000 Penetrant Lubricant, 1 Gal.
328-05005	005-1071	Ultra Pen Lube 2000 Penetrant Lubricant, 5 Gal.
408-00016	16PB	Blaster Penetrating Catalyst, 11 Oz.
433-35805	35805	Detecto Mist Air Leak Locator, 1 Qt.

### ECOSEAL

▪ **Permanently seals punctures up to 1/4"**  
 ▪ Prevents wheel corrosion  
 ▪ Uses recycled rubber and 100 percent biodegradable ingredients  
 ▪ Non-combustible by NFPA standards (flashpoint over 700°F)  
 ▪ Low freeze point (-10°F)  
 ▪ Freeze/thaw stable



ASCOT NO.	MFG. NO.	DESCRIPTION
451-05510	ST-XM55	5 Gal. EcoSeal Hand Pump
504-00005	ECO5G	5 Gal. Pail
504-00055	ECO55G	55 Gal. Drum
504-00275	ECO275G	275 Gal. Tote



### STS TIRE SEALANT

ASCOT NO.	MFG. NO.	DESCRIPTION
<b>STS TIRE SEALANT</b>		
451-04128	STS-CS4-128	1 Gal. (4 per Case)
451-00640	STS-640	5 Gal. Pail
451-00006	STS-6G	6 Gal. Pail
451-00055	STS-55G	55 Gal. Drum
<b>STS CONCENTRATE TIRE SEALANT</b>		
451-14128	STS-CON-CS4-128	1 Gal. (4 per Case)
451-01640	STS-CON-640	5 Gal. Pail
451-00026	STSCON-6G	6 Gal. Pail
451-00155	STS-CON--55G	55 Gal. Drum
<b>STS OTR TIRE SEALANT</b>		
451-24128	STS-OTR-CS4-128	1 Gal. (4 per Case)
451-02640	STS-OTR-640	5 Gal. Pail
451-00036	STSOTR-6G	6 Gal. Pail
451-00255	STS-OTR--55G	55 Gal. Drum

### STS TOOLS AND ACCESSORIES



451-00101

ASCOT NO.	MFG. NO.	DESCRIPTION
451-00101	ST-XM-1	1 Gal. Hand Pump
451-00440	ST-XM-44	5 Gal. Hand Pump
451-00551	STXM55	55 Gal. Transfer Pump
451-00707	ST-TTS-WW	STS Display Stand
469-02311	VCR-A	Auto Valve Core Tool
469-02312	VCR-F	Farm Valve Core Tool





➔ Markers, Crayons, Paintstik®, Quik Stik®, E-Z Break® Anti-Seize

# Markers

## PAINTSTIK® MARKERS

- Real paint in stick form
- Ideal for coding tire casings
- Marks are long lasting, water resistant and weather resistant
- Marks will withstand vulcanizing and recap temperatures
- Non-toxic, contains no lead
- Marking range -50°F to 150°F (-46°C to 66°C)
- INCLUDES: 12 sticks per box, 12 boxes per case



ASCOT NO.	COLOR	ASCOT NO.	COLOR	ASCOT NO.	COLOR
459-80220	White (Markal B)	459-80226	Green	459-80232	Aluminum
459-80221	Yellow (Markal B)	459-80227	Pink	459-80257	White
459-80222	Red	459-80228	Purple	459-80258	Yellow
459-80223	Black	459-80229	Brown	459-80271	Orange
459-80225	Blue	459-80230	Gray		
		459-80231	Gold		

## MARKAL CRAYON

- Ideal for temporary marking of tires
- Marks easily on wet or cold surfaces
- Lead-free, zinc-free marks can be painted over
- SIZE: 1/2" X 4-5/8"
- MARKING RANGE: -20°F to 130°F (-29°C to 24°C)
- INCLUDES: 12 sticks per box, 12 boxes per case



459-54222

ASCOT NO.	MFG. NO.	COLOR
459-54220	51420	White
459-54221	51422	Red
459-54222	51421	Yellow



The White Markal Crayon in use.

## B® HEX WHITE TIRE PAINTSTIK

- Ideal for temporary marking of tires
- Marks easily on wet or cold surfaces
- INCLUDES: 12 sticks per box, 12 boxes per case



459-80250

ASCOT NO.	MFG. NO.	DESCRIPTION
459-80250	80250	B® Hex White Tire Paintstik

## PAINTSTIK® MARKER HOLDER



494-08930

ASCOT NO.	MFG. NO.	DESCRIPTION
459-85000	85000	5" Metal Holder for Paintstik Marker
459-85100	85100	6" Push-Button Metal Holder for B-Paintstik

## QUIK STIK® MINI

- Fast-drying, vibrant paint marks dry in 5 to 7 minutes
- Compact plastic holder with clip cap stores easily in pocket and keeps hands and clothing clean
- Marks on virtually any surface; wet, smooth, rough, or hot
- Weather- and UV-resistant paint for long-lasting marks
- Solid paint marker advances and retracts by turning twist-up knob
- Xylene and 2-Butoxyethanol free formula to reduce health risks
- MARKING RANGE: 0°F to 392°F (-18°C to 200°C)



ASCOT NO.	MFG. NO.	DESCRIPTION	QTY./BOX
459-61126	61126	Mini Quik Stik® Marker (White)	12
459-61127	61127	Mini Quik Stik® Marker (Yellow)	12
459-61128	61128	Mini Quik Stik® Marker (Red)	12
459-61129	61129	Mini Quik Stik® Marker (Black)	12

## E-Z BREAK® ANTI-SEIZE COMPOUND-COPPER GRADE

- Copper-based anti-seize and lubricating compound
- Prevents seizing of aluminum wheels to steel brake drums or rotors
- Will not wash off in rain or snow
- Other applications include head bolts, exhaust manifolds and muffler connections, brackets and engine bolts
- Withstands temperatures to 1800°F (982°C)



494-01010

494-08916

ASCOT NO.	MFG. NO.	DESCRIPTION
494-01010	08910	10 Oz. Can With Brush in Cap
494-08907	08907	16 Oz. Can with Brush in Cap
494-08916	08916	14 Oz. Aerosol Can
494-08930	8930	2.25 Oz. Stick



494-08930

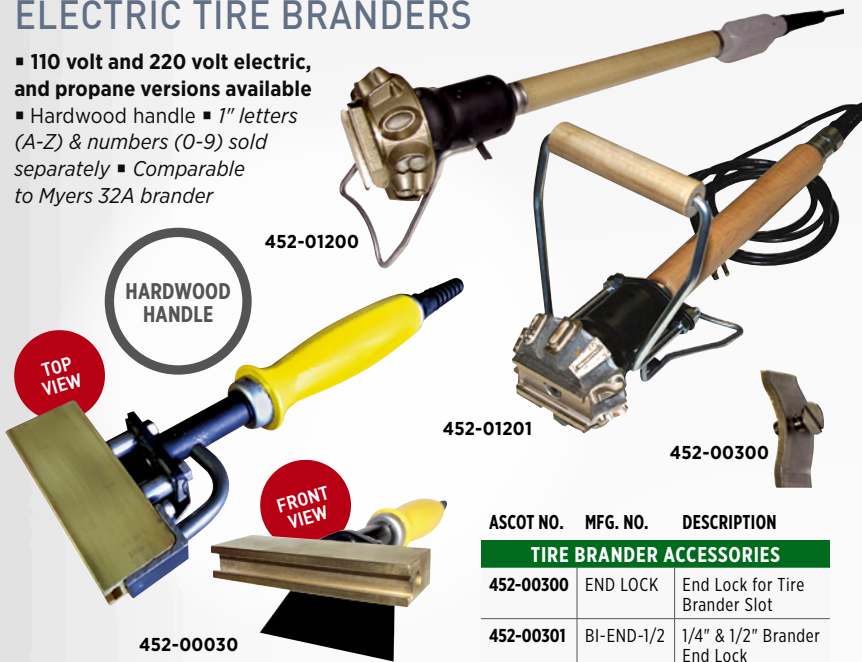
TIRE & WHEEL SERVICE // TIRE SERVICE SUPPLIES



# Tire Branders

## ELECTRIC TIRE BRANDERS

- 110 volt and 220 volt electric, and propane versions available
- Hardwood handle ▪ 1" letters (A-Z) & numbers (0-9) sold separately ▪ Comparable to Myers 32A brander



ASCOT NO.	MFG. NO.	DESCRIPTION
<b>TIRE BRANDER ACCESSORIES</b>		
452-00300	END LOCK	End Lock for Tire Brander Slot
452-00301	BI-END-1/2	1/4" & 1/2" Brander End Lock

ASCOT NO.	MFG. NO.	DESCRIPTION	
452-01201	BI-NTC-1000-TB-120WH	Electric Tire Brander w/ Auxiliary Handle, 110 volts* (1" Characters)	<b>Comparable to Myers 32A brander</b>
452-02400	BI-NTC-1000-TB-240	Electric Tire Brander 240 volts (1" Characters)	
452-00030	Model 30	Electric Tire Brander (1/4" & 1/2" Characters). Holds approximately (16) 1/4" characters and (10) 1/2" characters	

## PROPANE TIRE BRANDER

- Same branding head as electric branders but heated with a propane flame ▪ Use bar-b-que or larger propane tank ▪ **INCLUDES:** Branding head, torch head, 10' hose, handle, valve and propane fitting



ASCOT NO.	MFG. NO.	DESCRIPTION
452-03000	BI-Propane	Propane Tire Brander

## LETTERS AND NUMBERS FOR TIRE BRANDERS



1" Letters and Numbers

ASCOT NO.	MFG. NO.	DESCRIPTION
<b>1" LETTERS &amp; NUMBERS</b>		
452-00001	TBINOSET	Tire Brander 1" Number Set
452-00011	TB1LETSET	Tire Brander 1" Letter Set
452-00100	BI-CC-1BZ-0	Tire Brander 1" Insert: <b>0</b>
452-00101	BI-CC-1BZ-1	Tire Brander 1" Insert: <b>1</b>
452-00102	BI-CC-1BZ-2	Tire Brander 1" Insert: <b>2</b>
452-00103	BI-CC-1BZ-3	Tire Brander 1" Insert: <b>3</b>
452-00104	BI-CC-1BZ-4	Tire Brander 1" Insert: <b>4</b>
452-00105	BI-CC-1BZ-5	Tire Brander 1" Insert: <b>5</b>
452-00106	BI-CC-1BZ-6	Tire Brander 1" Insert: <b>6</b>
452-00107	BI-CC-1BZ-7	Tire Brander 1" Insert: <b>7</b>
452-00108	BI-CC-1BZ-8	Tire Brander 1" Insert: <b>8</b>
452-00109	BI-CC-1BZ-9	Tire Brander 1" Insert: <b>9</b>
452-00201	BI-CC-1BZ-A	Tire Brander 1" Insert: <b>A</b>
452-00202	BI-CC-1BZ-B	Tire Brander 1" Insert: <b>B</b>
452-00203	BI-CC-1BZ-C	Tire Brander 1" Insert: <b>C</b>
452-00204	BI-CC-1BZ-D	Tire Brander 1" Insert: <b>D</b>
452-00205	BI-CC-1BZ-E	Tire Brander 1" Insert: <b>E</b>
452-00206	BI-CC-1BZ-F	Tire Brander 1" Insert: <b>F</b>
452-00207	BI-CC-1BZ-G	Tire Brander 1" Insert: <b>G</b>
452-00208	BI-CC-1BZ-H	Tire Brander 1" Insert: <b>H</b>
452-00209	BI-CC-1BZ-I	Tire Brander 1" Insert: <b>I</b>
452-00210	BI-CC-1BZ-J	Tire Brander 1" Insert: <b>J</b>
452-00211	BI-CC-1BZ-K	Tire Brander 1" Insert: <b>K</b>
452-00212	BI-CC-1BZ-L	Tire Brander 1" Insert: <b>L</b>
452-00213	BI-CC-1BZ-M	Tire Brander 1" Insert: <b>M</b>
452-00214	BI-CC-1BZ-N	Tire Brander 1" Insert: <b>N</b>
452-00215	BI-CC-1BZ-O	Tire Brander 1" Insert: <b>O</b>
452-00216	BI-CC-1BZ-P	Tire Brander 1" Insert: <b>P</b>
452-00217	BI-CC-1BZ-Q	Tire Brander 1" Insert: <b>Q</b>
452-00218	BI-CC-1BZ-R	Tire Brander 1" Insert: <b>R</b>
452-00219	BI-CC-1BZ-S	Tire Brander 1" Insert: <b>S</b>
452-00220	BI-CC-1BZ-T	Tire Brander 1" Insert: <b>T</b>
452-00221	BI-CC-1BZ-U	Tire Brander 1" Insert: <b>U</b>
452-00222	BI-CC-1BZ-V	Tire Brander 1" Insert: <b>V</b>
452-00223	BI-CC-1BZ-W	Tire Brander 1" Insert: <b>W</b>
452-00224	BI-CC-1BZ-X	Tire Brander 1" Insert: <b>X</b>
452-00225	BI-CC-1BZ-Y	Tire Brander 1" Insert: <b>Y</b>
452-00226	BI-CC-1BZ-Z	Tire Brander 1" Insert: <b>Z</b>



➔ Character Sets, Serial Number Remover Tool, Tire Regrooving tools

LETTERS AND NUMBERS FOR TIRE BRANDERS (CONT.)



1/2" Letters and Numbers



1/4" Letters and Numbers

ASCOT NO.	MFG. NO.	DESCRIPTION
<b>1/2" LETTERS &amp; NUMBERS</b>		
452-00012	TB1/2NOSET	Tire Brander 1/2" Number Set
452-00112	TB1/2LETSET	Tire Brander 1/2" Letter Set
452-02100	BI-CC-1/2BR-0	Tire Brander 1/2" Insert: 0
452-02101	BI-CC-1/2BR-1	Tire Brander 1/2" Insert: 1
452-02102	BI-CC-1/2BR-2	Tire Brander 1/2" Insert: 2
452-02103	BI-CC-1/2BR-3	Tire Brander 1/2" Insert: 3
452-02104	BI-CC-1/2BR-4	Tire Brander 1/2" Insert: 4
452-02105	BI-CC-1/2BR-5	Tire Brander 1/2" Insert: 5
452-02106	BI-CC-1/2BR-6	Tire Brander 1/2" Insert: 6
452-02107	BI-CC-1/2BR-7	Tire Brander 1/2" Insert: 7
452-02108	BI-CC-1/2BR-8	Tire Brander 1/2" Insert: 8
452-02109	BI-CC-1/2BR-9	Tire Brander 1/2" Insert: 9
452-00501	BI-CC-1/2BR-A	Tire Brander 1/2" Insert: A
452-00502	BI-CC-1/2BR-B	Tire Brander 1/2" Insert: B
452-00503	BI-CC-1/2BR-C	Tire Brander 1/2" Insert: C
452-00504	BI-CC-1/2BR-D	Tire Brander 1/2" Insert: D
452-00505	BI-CC-1/2BR-E	Tire Brander 1/2" Insert: E
452-00506	BI-CC-1/2BR-F	Tire Brander 1/2" Insert: F
452-00507	BI-CC-1/2BR-G	Tire Brander 1/2" Insert: G
452-00508	BI-CC-1/2BR-H	Tire Brander 1/2" Insert: H
452-00509	BI-CC-1/2BR-I	Tire Brander 1/2" Insert: I
452-00510	BI-CC-1/2BR-J	Tire Brander 1/2" Insert: J
452-00511	BI-CC-1/2BR-K	Tire Brander 1/2" Insert: K
452-00512	BI-CC-1/2BR-L	Tire Brander 1/2" Insert: L
452-00513	BI-CC-1/2BR-M	Tire Brander 1/2" Insert: M
452-00514	BI-CC-1/2BR-N	Tire Brander 1/2" Insert: N
452-00515	BI-CC-1/2BR-O	Tire Brander 1/2" Insert: O
452-00516	BI-CC-1/2BR-P	Tire Brander 1/2" Insert: P
452-00517	BI-CC-1/2BR-Q	Tire Brander 1/2" Insert: Q
452-00518	BI-CC-1/2BR-R	Tire Brander 1/2" Insert: R
452-00519	BI-CC-1/2BR-S	Tire Brander 1/2" Insert: S
452-00520	BI-CC-1/2BR-T	Tire Brander 1/2" Insert: T
452-00521	BI-CC-1/2BR-U	Tire Brander 1/2" Insert: U
452-00522	BI-CC-1/2BR-V	Tire Brander 1/2" Insert: V
452-00523	BI-CC-1/2BR-W	Tire Brander 1/2" Insert: W
452-00524	BI-CC-1/2BR-X	Tire Brander 1/2" Insert: X
452-00525	BI-CC-1/2BR-Y	Tire Brander 1/2" Insert: Y
452-00526	BI-CC-1/2BR-Z	Tire Brander 1/2" Insert: Z

ASCOT NO.	MFG. NO.	DESCRIPTION
<b>1/4" LETTERS &amp; NUMBERS</b>		
452-00014	TB1/4NOSET	Tire Brander 1/4" Number Set
452-00114	TB1/4LETSET	Tire Brander 1/4" Letter Set
452-01100	BI-CC-1/4BR-0	Tire Brander 1/4" Insert: 0
452-01101	BI-CC-1/4BR-1	Tire Brander 1/4" Insert: 1
452-01102	BI-CC-1/4BR-2	Tire Brander 1/4" Insert: 2
452-01103	BI-CC-1/4BR-3	Tire Brander 1/4" Insert: 3
452-01104	BI-CC-1/4BR-4	Tire Brander 1/4" Insert: 4
452-01105	BI-CC-1/4BR-5	Tire Brander 1/4" Insert: 5
452-01106	BI-CC-1/4BR-6	Tire Brander 1/4" Insert: 6
452-01107	BI-CC-1/4BR-7	Tire Brander 1/4" Insert: 7
452-01108	BI-CC-1/4BR-8	Tire Brander 1/4" Insert: 8
452-01109	BI-CC-1/4BR-9	Tire Brander 1/4" Insert: 9
452-00401	BI-CC-1/4BR-A	Tire Brander 1/4" Insert: A
452-00402	BI-CC-1/4BR-B	Tire Brander 1/4" Insert: B
452-00403	BI-CC-1/4BR-C	Tire Brander 1/4" Insert: C
452-00404	BI-CC-1/4BR-D	Tire Brander 1/4" Insert: D
452-00405	BI-CC-1/4BR-E	Tire Brander 1/4" Insert: E
452-00406	BI-CC-1/4BR-F	Tire Brander 1/4" Insert: F
452-00407	BI-CC-1/4BR-G	Tire Brander 1/4" Insert: G
452-00408	BI-CC-1/4BR-H	Tire Brander 1/4" Insert: H
452-00409	BI-CC-1/4BR-I	Tire Brander 1/4" Insert: I
452-00410	BI-CC-1/4BR-J	Tire Brander 1/4" Insert: J
452-00411	BI-CC-1/4BR-K	Tire Brander 1/4" Insert: K
452-00412	BI-CC-1/4BR-L	Tire Brander 1/4" Insert: L
452-00413	BI-CC-1/4BR-M	Tire Brander 1/4" Insert: M
452-00414	BI-CC-1/4BR-N	Tire Brander 1/4" Insert: N
452-00415	BI-CC-1/4BR-O	Tire Brander 1/4" Insert: O
452-00416	BI-CC-1/4BR-P	Tire Brander 1/4" Insert: P
452-00417	BI-CC-1/4BR-Q	Tire Brander 1/4" Insert: Q
452-00418	BI-CC-1/4BR-R	Tire Brander 1/4" Insert: R
452-00419	BI-CC-1/4BR-S	Tire Brander 1/4" Insert: S
452-00420	BI-CC-1/4BR-T	Tire Brander 1/4" Insert: T
452-00421	BI-CC-1/4BR-U	Tire Brander 1/4" Insert: U
452-00422	BI-CC-1/4BR-V	Tire Brander 1/4" Insert: V
452-00423	BI-CC-1/4BR-W	Tire Brander 1/4" Insert: W
452-00424	BI-CC-1/4BR-X	Tire Brander 1/4" Insert: X
452-00425	BI-CC-1/4BR-Y	Tire Brander 1/4" Insert: Y
452-00426	BI-CC-1/4BR-Z	Tire Brander 1/4" Insert: Z

ASCOT NO.	MFG. NO.	DESCRIPTION	ASCOT NO.	MFG. NO.	DESCRIPTION
<b>CHARACTER SETS</b>					
452-00001	TB1NOSET	1" Tire Brander Number Set	452-00014	TB1/4NOSET	1/4" Tire Brander Number Set
452-00011	TB1LETSET	1" Tire Brander Letter Set	452-00112	TB1/2LETSET	1/2" Tire Brander Letter Set
452-00012	TB1/2NOSET	1/2" Tire Brander Number Set	452-00114	TB1/4LETSET	1/4" Tire Brander Letter Set

SERIAL NUMBER REMOVER TOOL



531-95001



531-95002

ASCOT NO.	MFG. NO.	DESCRIPTION
531-95001	TTHB-1	Serial Number Remover Tool
531-95002	RRB-1	12-Pack Replacement Blades

TIRE REGROOVING TOOLS & ACCESSORIES



155-12500

455-00003

ASCOT NO.	MFG. NO.	DESCRIPTION
455-00406		
455-00003	RC400	Rubber Cut 400 Rema Regroover
455-00129	N/A	Set Screw for PS-15 Regroover
455-00401	W-1	Regroover Blades 20-Pack
455-00402	W-2	Regroover Blades 20-Pack
455-00403	W-3	Regroover Blades 20-Pack
455-00404	W-4	Regroover Blades 20-Pack
455-00405	W-5	Regroover Blades 20-Pack
455-00406	W-6	Regroover Blades 10-Pack
455-00444	No. 4 Head	Replacement Head for 125 Groover
455-04444	No. 4 Bld.	Replacement Blades for 125 Groover
455-12500	125	Heavy Duty Pistol Grip Tire Groover
455-15017	N/A	Transformer for PS-15 Regroover
455-15019	N/A	Rotative Switch for PS-15 Regroover

TIRE & WHEEL SERVICE // TIRE SERVICE SUPPLIES



→ “Combi” Tire Bead Breaker, Giant Tire/Earthmover Bead Breaker

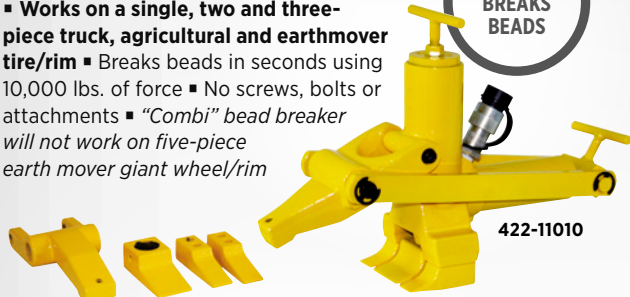


# Bead Breakers

## “COMBI” TIRE BEAD BREAKER

▪ Works on a single, two and three-piece truck, agricultural and earthmover tire/rim ▪ Breaks beads in seconds using 10,000 lbs. of force ▪ No screws, bolts or attachments ▪ “Combi” bead breaker will not work on five-piece earth mover giant wheel/rim

QUICKLY BREAKS BEADS



422-11010



422-12000



422-12020

ASCOT NO.	MFG. NO.	DESCRIPTION
422-11010	11010	Bead Breaker
422-12000	12000	Bead Breaker Kit. <b>INCLUDES:</b> 11010 Bead Breaker, 15000 Pump and 16040 Hose Assembly
422-12020	12020	Bead Breaker Kit. <b>INCLUDES:</b> 11010 Bead Breaker, 15920 Pump and 16040 Hose Assembly
422-16200	16200	Conversion Kit for Combi Bead Breaker

## MODIFIED “COMBI” TIRE BEAD BREAKER

▪ Modified 11010, the most popular tool for breaking beads on all agriculture wheels ▪ Most affordable bead breaker for new 3 piece wheel assemblies ▪ Modified jaw and feet allow for larger grab on larger wheel assemblies ▪ Can be used on the front and back side of the wheel assembly ▪ All parts (except for modified feet and jaw) can be interchanged with 11010

MOST POPULAR



422-11020

ASCOT NO.	MFG. NO.	DESCRIPTION
422-11020	11020	Modified “Combi” Tire Bead Breaker

## GIANT TIRE/EARTHMOVER TIRE BEAD BREAKER

▪ Use on 5-piece rims 15” to 51” without pry bar/bead loosening pockets ▪ Model 15000, 15920 or 15040 air/hydraulic pump recommended for operation ▪ Replaces Goodyear TO-100-HA



422-11040

ASCOT NO.	MFG. NO.	DESCRIPTION
422-11040	11040	Giant Tire/Earthmover Tire Bead Breaker

## GIANT TIRE/EARTHMOVER TIRE BEAD BREAKER

▪ 4-1/4” stroke, 14-ton ram will break the toughest beads ▪ Use on 5-piece rim 25” to 51” with pry bar/bead loosening pocket ▪ Replaces Goodyear TO-1600-HA ▪ Same as IMT-1800 ▪ Model 15000, 15020 or 15040 air/hydraulic pump recommended

BREAKS TOUGHEST BEADS



The Giant Tire/Earthmover Tire Bead Breaker in use.



422-11000

ASCOT NO.	MFG. NO.	DESCRIPTION
422-11000	11000	Bead Breaker
422-12070	12070	Bead Breaker Kit. <b>INCLUDES:</b> 11000 Bead Breaker, 15000 Pump, 16040 Hose Assembly
422-12090	12090	Bead Breaker Kit. <b>INCLUDES:</b> 11000 Bead Breaker, 15920 Pump, 16040 Hose Assembly

## TITAN EARTHMOVER BEAD BREAKER

▪ Ideal for tire dealer who requires occasional use of bead breaker ▪ 10-ton cylinder has enough force to break most beads ▪ 4” (10 cm) stroke length ▪ Unit will work on 5 piece wheels with bead loosening pockets ▪ **WEIGHT:** 34 lbs. (15.5 kg)



422-11005

ASCOT NO.	MFG. NO.	DESCRIPTION
422-11005	11005	Titan Earthmover Bead Breaker

TIRE & WHEEL SERVICE // BEAD BREAKERS, BEAD SEATING DEVICES



➔ Giant Tire/Earthmover Bead Breaker, Agricultural Bead Breaker

**OTR GIANT TIRE BEAD BREAKER**

▪ **Compact, lightweight tool used primarily on 25" and 29" earthmover wheels** ▪ Originally marketed as Goodyear TO-1600-HA ▪ Works only on 5 piece wheels with bead loosening pockets ▪ 2 1/8" (5.4 cm) stroke ▪ 10 tons of hydraulic force ▪ Used with 10,000 PSI (700 bar) air/hydraulic pump ▪ **WEIGHT:** 23 lbs. (10 kg)



422-11050

ASCOT NO.	MFG. NO.	DESCRIPTION
422-11050	11050	OTR Giant Tire Bead Breaker

**OTR 3000 GIANT TIRE BEAD BREAKER**

▪ **Designed specifically to work on Topy and Rimex OE wheels found on Terex, Komatsu, Liebherr and Le Tourneau** ▪ Designed to prevent the tool from kicking out while under load ▪ 6" Stroke ram delivers maximum force ▪ New Universal Jaw design works on ALL wheels 51" – 63" ▪ **WEIGHT:** 54 lbs. (24.5 kg)



422-11044

ASCOT NO.	MFG. NO.	DESCRIPTION
422-11044	11044	OTR 3000 Giant Tire Bead Breaker

**GIANT TIRE/EARTHMOVER TIRE BEAD BREAKER**

▪ **Use on all 39", 45", 49", 51", 57" and 63" wheel sizes** ▪ In most cases you must first use Model 10105 or 10100 bead breaker to start the movement of the rim flange. Model 11030 can then be used ▪ Model 15020 or 15040 air/hydraulic pump recommended for operation ▪ Replaces Goodyear TO-2000-HA



422-10103

ASCOT NO.	MFG. NO.	DESCRIPTION
422-10103	11030	Giant Tire Earthmover Bead Breaker
422-12110	12110	Kit Contains 11030 Bead Breaker, 15040 Pump And 16020 Hose Assembly

**DUAL AGRICULTURAL TRACTOR TIRE BEAD BREAKER**

▪ **HEAVY DUTY:** 10-tons of force breaks the toughest beads ▪ Breaks inside bead on outside dual farm tractor tires ▪ Requires just 3" of operating space between dual tractor tires ▪ Use with 10,000 PSI air/hydraulic pump ▪ No need to remove outside wheel to change tire on outside dual



422-11060

ASCOT NO.	MFG. NO.	DESCRIPTION
422-11060	11060	Dual Agricultural Tractor Tire Bead Breaker

**DUAL AGRICULTURAL 300 TIRE BEAD BREAKER**

▪ **Designed for all agricultural applications** ▪ Lightweight and easy to handle ▪ Requires only 4 1/2" (11.5 cm) operating space ▪ 5 Tons of pushing force ▪ Opens to 12" (30.5 cm) wide ▪ **WEIGHT:** 20 lbs. (9kg)



422-11065

ASCOT NO.	MFG. NO.	DESCRIPTION
422-11065	11065	Dual Agricultural 300 Tire Bead Breaker

**TITAN FARM TIRE BEAD BREAKER**

▪ **Ideal for tire dealer who requires occasional use of bead breaker** ▪ 10-ton cylinder has enough force to break most beads ▪ 4" (10 cm) stroke length ▪ Unit will break all single and 2-piece and most 3-piece wheels ▪ **WEIGHT:** 34 lbs. (15.5 kg)



422-11015

ASCOT NO.	MFG. NO.	DESCRIPTION
422-11015	11015	Titan Farm Tire Bead Breaker

TIRE & WHEEL SERVICE // BEAD BREAKERS, BEAD SEATING DEVICES

➔ Lightweight Bead Breakers, Heavy Duty Bead Breakers, Kits



## Bead Breakers (cont.)

### STINGER BEAD BREAKER

- **OTR Bead Breaker for heavy duty**
- 3-piece rims that replace standard 5-piece rims
- Works on both front and back of wheel without dismantling wheel from vehicle
- Works on all new 3-piece 25" wheels or larger
- Works on all wheels with CAT "Shur-Lok" safety feature



The Stinger Bead Breaker in use.

ASCOT NO.	MFG. NO.	DESCRIPTION
318-11090	11090	Stinger Bead Breaker

### TRUCK TIRE BEAD BREAKER

- **Break both tire beads at the same time**
- **WORKS ON ALL TRUCK TIRE SIZES:** 19.5-24.5 + Super Singles & X-One wide base types
- No more back injuries from lifting 300+ lb. tires
- Simple Operation
- Compact Storage
- Breaks the Bead with 5,000 lbs. of Force
- **HELPS COMPLY WITH OSHA 29CFR1910.177 - REG:** Striking of Tire with Steel Hammers
- Limits Workman's Compensation Claims



422-20425

ASCOT NO.	MFG. NO.	DESCRIPTION
422-20425	20425	Truck Tire Bead Breaker

### DIAMONDBACK ALUMINUM BEAD BREAKER KIT

- **Lightweight Aluminum reduces weight by 40%**
- Longer feet allow better fit onto wheel/rim
- Feet fully engage rim flange and push against the bead of the tire
- **WEIGHT:** 31 lbs. (14kg)



422-11076

ASCOT NO.	MFG. NO.	DESCRIPTION
422-11076	11076	Diamondback Aluminum Bead Breaker Kit

### DIAMONDBACK BEAD BREAKER UPGRADE KIT

- **Will work with existing Aluminum Bead Breakers, including AME model 11070 and IMT-1000**
- Longer feet allow the tool to fully engage the bead of the tire
- Helps tool to push on the bead, not the sidewall
- Installation instructions included



422-17200

ASCOT NO.	MFG. NO.	DESCRIPTION
422-17200	17200	Diamondback Bead Breaker Upgrade Kit



### PNEUMATIC BEAD BREAKER

- **Recommended for agricultural, small OTR and most truck tires**
- **EXTREMELY FAST:** saves time over conventional hydraulic bead breakers
- **LIGHTER WEIGHT THAN CONVENTIONAL BEAD BREAKERS:** only 17 lbs.
- Includes storage case
- Requires a minimum of 85 psi



423-00101

ASCOT NO.	MFG. NO.	DESCRIPTION
423-00101	GTABB-01	Pneumatic Bead Breaker



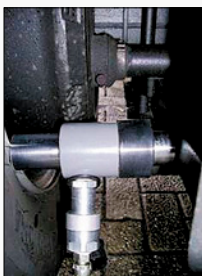
TIRE & WHEEL SERVICE // BEAD BREAKERS, BEAD SEATING DEVICES

➔ **Bead Breakers, Demount Tool, Driving Iron**



**WINNTEC WHEEL BREAKER SET**

▪ **Provides a safe and easy way to loosen oxidized (stuck) wheels** ▪ Simply place the ram between the duals or between the inside wheel & frame ▪ The manual pump allows the technician to feel how much pressure is being applied ▪ *Adaptors included for wider work spaces*



The Winntec Wheel Breaker Set in use.

ASCOT NO.	MFG. NO.	DESCRIPTION
422-47180	G471180	Winntec Wheel Breaker Set

**SLIDE HAMMER BEAD BREAKER**

▪ **Protect your expensive wheels from swinging hammers by breaking the bead loose with this slide hammer** ▪ *Use only on wheels without a hump*



ASCOT NO.	MFG. NO.	DESCRIPTION
427-12026	12026B	Slide Hammer Bead Breaker

**PLATINUM DEMOUNT TOOL**

▪ **Demounts tire sizes 17.5" - 24.5"** ▪ Only a single tool needed to demount tires ▪ Eliminates the need to lift the tire and wheel making a hard job easy and protecting against insurance claims ▪ Unique design protects valuable tire casings for retreading ▪ Handle design protects against damage to the tool and other objects that may come in contact



ASCOT NO.	MFG. NO.	DESCRIPTION
448-12100	12100	Platinum Demount Tool

**IMPACT BEAD BREAKER**

▪ **Loosens the most stubborn beads with floating bead breaking foot and ram bar** ▪ Forces wedge foot between head and rim flange ▪ Delivers blow directly to the tip ▪ Designed for shop or road use



ASCOT NO.	MFG. NO.	DESCRIPTION	LENGTH	LENGTH EXT.	WEIGHT
427-35924	T24B	Economy	46"	72"	13.5 Lbs.
427-35926	T26B	Heavy Duty	50"	80"	23 Lbs.
427-45926	35926-11	Impact Bead Breaker Replacement Grips			

**FLOOR TYPE BEAD BREAKER**

▪ **Use on custom wheels, without center holes, wide based motorcycle tires, ATV tires** ▪ Used to prevent bending of wheels



ASCOT NO.	MFG. NO.	DESCRIPTION	TREAD WIDTH	WEIGHT
421-00098	T98	Deluxe	Up to 11"	28.5 Lbs.

**PORTABLE BEAD BREAKER**

▪ **Breaks beads on most sizes of passenger tires & light trucks**



ASCOT NO.	MFG. NO.	DESCRIPTION	HANDLE LENGTH	WEIGHT
421-00100	T100	Portable Bead Breaker	36"	5.2 Lbs.

**DRIVING IRON**

▪ **Used for loosening rusted truck and bus beads**



ASCOT NO.	MFG. NO.	DESCRIPTION	LENGTH	STOCK	WEIGHT
427-26000	T26A	Driving Iron	11-3/4"	1-1/4"	4.4 Lbs.

TIRE & WHEEL SERVICE // BEAD BREAKERS, BEAD SEATING DEVICES

➔ **Bead Breaker, Bead Breaking Tools, Hydraulic Pumps**

## Bead Breakers (cont.)

### “SWAN NECK” BEAD BREAKING TOOLS

▪ **PORTABLE TOOLS:** Great alternative to handled bead breaking wedges or hydraulic bead breakers



427-00042

427-00052

ASCOT NO.	MFG. NO.	LENGTH	STOCK	WT.
427-00041	T41	30"	7/8"	5.3 Lbs.
427-00042	T42	30"	7/8"	4.8 Lbs.
427-00052	T52	33"	7/8"	5.5 Lbs.

### ATV BEAD BREAKER

▪ **Constructed of heavy duty steel**  
 ▪ Works with any center-post tire changing machine and adjusts to sizes of 6" to 12" ATV rims  
 ▪ No hammers, wrenches or additional tools required



421-38620

ASCOT NO.	MFG. NO.	DESC.	WEIGHT
421-38620	38620	ATV Bead Breaker	7 Lbs.

## Hydraulic Pumps, Rams

### ECONOMY AIR HYDRAULIC PUMP

▪ **Provides up to 10,000 PSI with standard shop air supply** ▪ Reservoir made of durable aluminum  
 ▪ Built-in pressure bypass system to prevent overload of operation ▪ User-friendly foot-actuated design for easy control of moving fluid

ASCOT NO.	MFG. NO.	DESCRIPTION
422-22903	22903	1.39-Quart Capacity
422-22905	22905	1.75-Quart Capacity



422-22903

### TURBO II AIR HYDRAULIC PUMP (3.5-QUART OIL CAPACITY)

▪ **Rugged polyglass reservoir with sight gauge** ▪ 10,000 PSI hydraulic pressure ▪ Easily works on rams and bead breakers with oil to spare ▪ Unique design easily fits truck storage bins  
 ▪ Turbo II pump-fastest pump available ▪ Redesigned air motor is inexpensive to service ▪ User-friendly foot-actuated design for easy control of moving fluid

ASCOT NO.	MFG. NO.	DESCRIPTION
318-15000	15000	3.5-Quart Air Hydraulic Pump
318-15010	15010	Above Pump With Hydraulic Hose
318-15020	15020	5-Quart Air Hydraulic Pump



318-15000

### AIR HYDRAULIC PUMP (5-QUART OIL CAPACITY)

▪ **Rugged 5-quart metal reservoir** ▪ Air inlet filter keeps air clean ▪ All metal air motor  
 ▪ 10,000 PSI hydraulic pressure

ASCOT NO.	MFG. NO.	DESCRIPTION
318-15920	15920	5-Quart Air Hydraulic Pump
318-15930	15930C	Air Hydraulic Pump w/Hose & Coupler



318-15920

### MILLER MUD FLAP

▪ **Fits AME 15920 and IMT style pumps** ▪ Prevents dirt from getting into the release valve assembly  
 ▪ Inexpensive solution to lengthen the life of your pumps

ASCOT NO.	MFG. NO.	DESCRIPTION
318-15901	15901	Miller Mud Flap



318-15901

### AIR HYDRAULIC PUMP (2-GALLON OIL CAPACITY)

▪ **Rugged 2-gallon metal reservoir**  
 ▪ Air inlet filter keeps air clean ▪ All metal air motor ▪ 10,000 PSI hydraulic pressure

ASCOT NO.	MFG. NO.	DESCRIPTION
318-15940	15940	2-Gallon Air Hydraulic Pump
318-15950	15950C	2-Gallon Air Hydraulic Pump w/Hose & Coupler

RUGGED 2-GALLON CAPACITY



318-15901

TIRE & WHEEL SERVICE // BEAD BREAKERS, BEAD SEATING DEVICES



→ Hydraulic Rams, Hydraulic Hoses, Cylinders



**SINGLE ACTING ALUMINUM LOCK NUT CYLINDER**



- Safety lock nut for mechanical load holding
- Low weight and good portability
- High flow quick coupler
- Overflow port functions as a stroke limiter
- Spring return
- Features a carrying handle

ASCOT NO.	MFG. NO.	CAPACITY (TONS)	COLLAPSED HEIGHT	EXTENDED HEIGHT	WEIGHT (LBS.)
318-10808	10808	50	12-1/2"	18-3/4"	26.4
318-10809	10809	100	13-1/3"	19-3/4"	66

318-10808

**55-TON AND 100-TON ALUMINUM RAMS**

- Lightweight yet durable
- For use with 10,000 PSI pumps
- Ships completely assembled with valve, coupler and base
- Perfect for off highway truck work
- The preferred jack for road service



318-13000

318-13081

318-13120

318-13140

ASCOT NO.	MFG. NO.	RECOMMENDED PUMP	CAP. (TONS)	COLLAPSED HEIGHT	EXTENDED HEIGHT	WEIGHT (LBS.)
318-13081	13081	15930C	55	11-1/4"	17-1/4"	24.5
318-13120	13120	15930C	55	12-1/4"	18-1/4"	29
318-13000	13000	15930C	100	11-3/4"	17-3/4"	38
318-13140	13140	15930C	55	16-1/4"	26-1/4"	53

**LOW PROFILE CYLINDER KIT**

- Compact Design for use in confined spaces
- Convenient storage case to keep cylinders and adapters together
- Specially designed return spring ensures a quick retraction and extends the lift of the spring
- INCLUDES: Stackable 1", 2" & 3" aluminum adapters that conveniently snap into the base of the ram; high flow ball coupler and dust cap
- Rod wiper helps seal out dirt and contamination



318-72101

ASCOT NO.	MFG. NO.	CAP. (TONS)	STROKE	CYLINDER EFFECTIVE AREA	COLLAPSED HEIGHT	EXTENDED HEIGHT	OPERATING PRESSURE	CYLINDER HOUSING DIAMETER	RAM PLUNGING DIAMETER	WEIGHT (LBS.)
318-72101	72101	10	1-1/2"	2.35"	3-3/8"	4-7/8"	8.5 PSI	2-3/4"	1-1/2"	10

**HYDRAULIC RAMS**

- Used to push off rear rim flange and tire bead on earthmover wheels
- For all earthmover tires, trucks and perfect for construction



422-13050

422-13040

422-13030

422-13020

422-13010

ASCOT NO.	MFG. NO.	CAP. (TONS)	COLLAPSED HEIGHT	STROKE
422-13010	13010	10	4-3/4"	2-1/8"
422-13020	13020	10	6-3/4"	4"
422-13030	13030	10	9-3/4"	6-1/8"
422-13040	13040	10	11-3/4"	8"
422-13050	13050	10	13-3/4"	10-1/8"
422-13060	13060	30	4-5/8"	2-7/16"
422-13090	13090	25	12-3/4"	8-1/4"
422-13100	13100	25	10"	6-1/4"

**3/8" HYDRAULIC HOSES**

- 10,000 PSI Working Pressure, 20,000 PSI Burst Pressure
- High flow valve for fast inflation
- Includes half coupler and plastic dust cover



ASCOT NO.	MFG. NO.	DESCRIPTION
318-04960	9010-08	8' Hydraulic Hose Assembly
318-04120	9010-10	10' Hydraulic Hose Assembly

TIRE & WHEEL SERVICE // BEAD BREAKERS, BEAD SEATING DEVICES

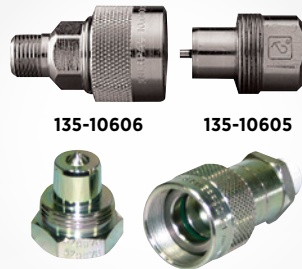
→ Hydraulic Couplers, Quick Couplers, Flange Ring Puller, Push Bar, Push Off Tool



## Hydraulic Pumps, Rams (cont.)

### HY-FLO HYDRAULIC COUPLER

- **Lightweight yet durable**
- Includes ram and hose portions
- Interchanges with OTC, Power Team and ESCO hydraulic products



ASCOT NO.	MFG. NO.	DESCRIPTION
135-10605	16050	Hose Male Half Coupler
135-10606	16060	Ram Female Half Coupler
135-16000	16000	Hy-Flo Hydraulic Coupler

### HYDRAULIC QUICK CONNECT COUPLER/PLUG

- **10,000 PSI maximum operating pressure**
- Safety sleeve lock prevents accidental disconnection
- Heavy duty back-up ring prevents o-ring extrusion
- Heat treated and plated steel for greater wear and corrosion resistance
- Self-sealing poppet valves provide excellent high and low pressure seating



ASCOT NO.	MFG. NO.	DESCRIPTION
135-11606	FD35-1001-0606	Hydraulic Quick Connect Coupler
135-12606	FD35-1002-0606	Hydraulic Quick Connect Plug

### QUICK COUPLERS

- **Precision built and designed for high pressure**
- Permits disconnecting without loss of oil
- 3/8" NPTF

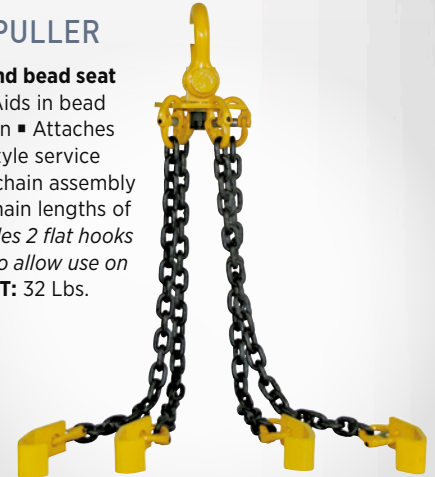


ASCOT NO.	MFG. NO.	DESCRIPTION
318-09795	9795	Complete Quick Coupler
318-09796	9796	Ram Half Coupler And Dust Cap
318-09797	9797	Ram Half Coupler Dust Cap Only
318-09798	9798	Hose Half Coupler Only
318-09799	9799	Hose Half Coupler Dust Cap Only
319-09866	9866	Hose or Ram Half Dust Cap

## OTR Service Tools

### FLANGE RING PULLER

- **Lifts the rim base and bead seat band from the tire**
- Aids in bead seating during inflation
- Attaches to a standard boom style service truck
- 4-point hook/chain assembly for optimal lifting
- Chain lengths of 30" (76.2 cm)
- Includes 2 flat hooks and 2 tapered hooks to allow use on all rim styles
- **WEIGHT: 32 Lbs.**



ASCOT NO.	MFG. NO.	CAPACITY
402-08029	93000	5,000 Lbs.

### 2-WAY PUSH BAR

- **Two-way push bar allows for quick and easy depression of the bead seat band flange ring and rim for removal of the lock ring and O-ring**
- Can also be used to retain the tire during inflation



ASCOT NO.	MFG. NO.	CAPACITY
429-06661	92005	33" to 57"
429-08837	92000	25" to 51"

### BEAD PUSH OFF TOOL

- **Lightweight tool for removing combine and tractor tires after breaking the bead**
- Pushing force of 8,000 lbs. and a 5.5" stroke, a removable handle for compact storage and uses hydraulic pressure to force the tire off the rim
- Hooks between the rim and the tire bead



ASCOT NO.	MFG. NO.	DESCRIPTION
429-10108	11080	Bead Push Off Tool



➔ Bead Hooks, Tire Sling, Ring Master O-Ring & Lock-Ring Installer

BEAD HOOKS



429-00441

429-01601

ASCOT NO.	MFG. NO.	DESCRIPTION	CAPACITY
429-00441	B0441PC	Bead Hook	12,000 Lbs.
429-01601	D1601PC	Bead Hook	16,000 Lbs.

EARTHMOVER TIRE BEAD HOOKS

▪ Used to connect with hydraulic boom on tire service truck for transport of tires ▪ Model 94000 has slim design which will fit inside all tires, even ones that have been stacked



429-90401

429-90402

429-90403



ASCOT NO.	MFG. NO.	DESCRIPTION	CAPACITY
429-90401	94010	Earthmover Tire Bead Hook	16,000 Lbs.
429-90402	94020	Earthmover Tire Bead Hook	12,000 Lbs.
429-90403	94000	Earthmover Tire Bead Hook	4,000 Lbs.

TIRE SLING

- Adjustable locking sling for dismounting single or dual assembly tires ▪ With locking mechanism so tires don't rotate
- MADE IN THE USA



402-06662

ASCOT NO.	MFG. NO.	DESCRIPTION	CAPACITY
402-06662	91000	Small Sling Assembly	6,500 Lbs.

RING MASTER O-RING AND LOCK RING INSTALLER

- Pushes & Holds rim flange & tire back for easy O-ring and lock ring installation
- Lightweight and easy to use ▪ PORTABLE: Fits in tire truck tool box
- Eliminates use of boom crane & cumbersome tire tools ▪ Easy one-man operation
- Works on all 3-piece and 5-piece rim/wheels up to 30" in diameter
- Great for tough to handle forestry tires/wheels
- Eliminates danger of pushing equipment off jack with crane ▪ MADE IN THE USA



The Ring Master O-Ring and Lock Ring Installer in use.



429-70162



ASCOT NO.	MFG. NO.	DESCRIPTION
429-70162	70162	Ring Master O-Ring and Lock Ring Installer

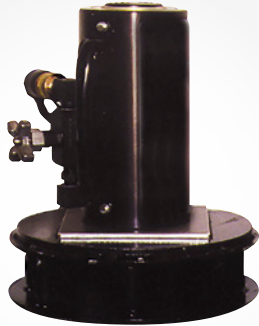
TIRE & WHEEL SERVICE // BEAD BREAKERS, BEAD SEATING DEVICES

→ Cribbing, Cribbing Sets, Wheel Chocks



# Cribbing Sets

CRIBBING SET FOR 55-TON RAM NESTING

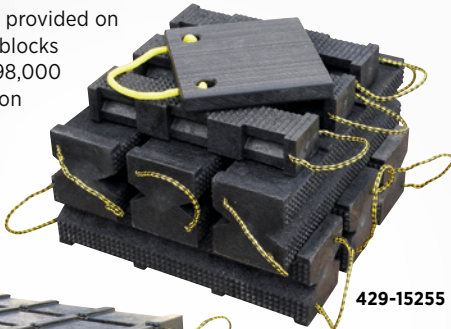


429-08075

ASCOT NO.	MFG. NO.	DESCRIPTION	SIZE
429-08075	15012	Cribbing Set	3"
429-08076	15022	Cribbing Set	6"
429-08077	15032	Cribbing Set	9"

## SUPER STACKER CRIBBING

- **Industrial cribbing blocks made from 100% recycled plastic** ▪ Provide superior strength compared to hardwood or softwood ▪ Provide visual warning of overload
- Interlocking and aggressive non-slip surfaces ▪ Non-conductive plastic construction
- Carry lanyards provided on all 6x7 and 4x4 blocks
- Rated up to 298,000 lbs., depending on configuration
- *Testing paperwork available and can be filed on service truck*



429-15255



429-15260



ASCOT NO.	MFG. NO.	DESCRIPTION
429-15255	15255	<b>KIT INCLUDES:</b> (6) 15230, (3) 15210 and (1) 14465
429-15260	15260	<b>KIT INCLUDES:</b> (12) 15230 150T Capacity when Used in 3-Block Configuration

## STEEL CRIB KIT



▪ **Durable Steel Cribbing, will not bend or warp**

▪ Model 15002 is a complete set: 3", 6" and 9" stands ▪ Units can be nested together for 18" of total lift ▪ Recessed area on cribbing fits 7" square plate on 55-Ton Cylinders ▪ Each unit has carry handle

429-08074

ASCOT NO.	MFG. NO.	DESCRIPTION
429-08074	15002	Steel Crib Kit

## OFF-ROAD URETHANE WHEEL CHOCKS

- **Specifically designed for the mining and construction industries** ▪ Tough Urethane Construction ▪ Resistant to Oils, Fuels and Solvents ▪ Mounting Hole for Ropes, Chains or Brackets ▪ Replaceable Rubber Anti-slip Traction Pads ▪ Molded-in "How to Use" Guidelines ▪ Safety Yellow Caution Color ▪ Recessed Carrying Handle



396-15305



396-15310



396-15315



396-15320

ASCOT NO.	MFG. NO.	DESCRIPTION	DIMENSIONS	WEIGHT
396-15305	15305	For Mine Support Equipment such as Lubrication Trucks and Heavy Maintenance Vehicles	15" x 15.1" x 11"	19 Lbs.
396-15310	15310	For Mine Haul Trucks with Tire Sizes up to 105" Diameter and Load Capacities up to 120-Ton	17.7" x 15.2" x 10"	28 Lbs.
396-15315	15315	For Mine Haul Trucks with Tire Sizes up to 105" Diameter and Load Capacities up to 400-Ton (A Minimum of 4 Chocks Must be Used when Chocking Haul Trucks with Load Capacities from 240- to 400-Ton)	24.6" x 14.5" x 16"	42 Lbs.
396-15320	15320	For Mine Haul Trucks with Tire Sizes over 105" Diameter and Load Capacities up to 240-Ton	21.9" x 14.9" x 10.6"	39 Lbs.

TIRE & WHEEL SERVICE // BEAD BREAKERS, BEAD SEATING DEVICES

➔ 5-Gallon Bead Seater, 38-Liter Bead Seater

# Bead Seating Devices



## 5-GALLON BEAD SEATER

- **5-gallon capacity**
- Equipped with a butterfly valve for maximum air discharge
- Rubber foot pads to lessen vibration
- Designed for commercial use on large truck tires, passenger and ATV tires to 24.5"
- Made in Taiwan



5-GALLON CAPACITY

BUTTERFLY VALVE

RUBBER FOOT PADS

## 38-LITER BEAD BOOSTER

- **Newly-patented Turbo Barrel option delivers even greater volume of air by drawing surrounding air into the tire chamber upon firing**
- 38L (10-gallon) Bead Booster™ for larger tires
- 2" RAR Valve release for added release velocity
- Aluminum tank weighs only 28 lbs.
- Includes new trigger safety

TURBO BARREL OPTION

NEW TRIGGER SAFETY

ASCOT NO.	MFG. NO.	DESCRIPTION
<b>5-GALLON BEAD SEATER ACCESSORIES</b>		
473-01502	RPG-05GAL-02	Safety Valve for RPG Bead Seater
473-01504	RPG-05GAL-04	Butterfly Valve for RPG Bead Seater
473-01505	RPG-05GAL-05	Threaded Barrel for RPG Bead Seater
473-01506	RPG-05GAL-06	Air Pressure Gauge for RPG Bead Seater
473-01507	RPG-05GAL-07	1-1/2" Pipe Nipple for RPG Bead Seater
473-01508	RPG-05GAL-08	1-1/2" Lock Nut for RPG Bead Seater
473-01509	RPG-05GAL-09	90° NPT Elbow for RPG Bead Seater
473-01510	RPG-05GAL-10	Ball Valve for RPG Bead Seater
473-01511	RPG-05GAL-11	Rubber Pad for RPG Bead Seater
473-01512	RPG-05GAL-12	Rounded Head Bolt for RPG Bead Seater
473-01513	RPG-05GAL-13	Handle for RPG Bead Seater
473-01514	RPG-05GAL-14	Handle Nut for RPG Bead Seater
473-01515	RPG-05GAL-15	Valve Body for RPG Bead Seater



473-01500



473-00038

ASCOT NO.	MFG. NO.	DESCRIPTION
473-01500	RPG-05GAL	5-Gallon Bead Seater

ASCOT NO.	MFG. NO.	DESCRIPTION
473-00038	GB38L	38-Liter Bead Booster w/ Jet Assisted Barrel

TIRE & WHEEL SERVICE // BEAD BREAKERS, BEAD SEATING DEVICES

Cheetah Bead Seaters



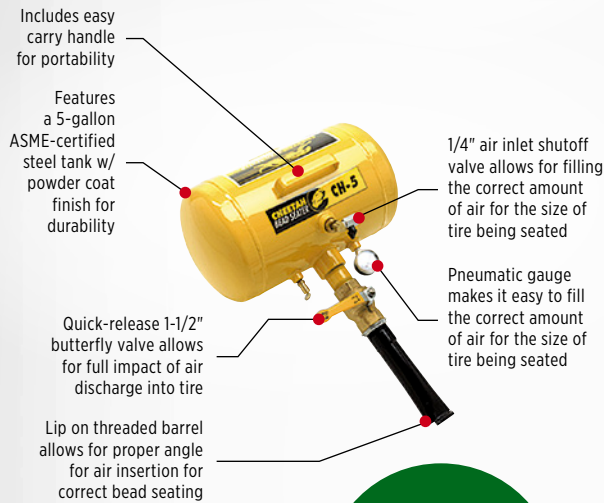
## Bead Seating Devices (cont.)

### 5-GALLON CHEETAH BEAD SEATER

- **Makes seating the most difficult bead safe and simple** ▪ 5-gallon capacity
- **APPLICATIONS:** Designed for commercial use on large truck tires, passenger and ATV tires to 24.5" ▪ Fill tank from any service station chuck or service truck air compressor



473-00500



Included mounting feet makes storing the unit easy and helps protect the barrel assembly from damage (not shown)

ASCOT NO.	MFG. NO.	DESCRIPTION
473-00500	CH-5	Cheetah Bead Seater, 5-Gallon
473-00501	CH-5AL	Same As Above With Aluminum Tank

### 10-GALLON CHEETAH BEAD SEATER

- **10-gallon capacity with ASME certified tank** ▪ **APPLICATIONS:** Designed for small rear agri/grader or smaller tires; Standard for fleet work, farm and service trucks



473-00010

ASCOT NO.	MFG. NO.	DESCRIPTION
473-00010	CH-10	10-Gallon
473-00011	CH-10AL	10-Gallon With Aluminum Tank

### 13-GALLON CHEETAH BEAD SEATER

- **13-gallon capacity with ASME certified tank**
- **APPLICATIONS:** Seats bead on tractor & heavy equipment tires from 24.5" to 54" ▪ Includes a straight barrel, new Magnum barrel (for larger tires) and safety goggles as standard equipment
- Extends tire service capability not possible with portable unit

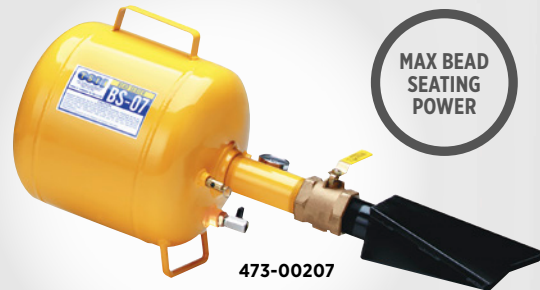


473-00013

ASCOT NO.	MFG. NO.	DESCRIPTION
473-00012	CH-13	13-Gallon
473-00013	CH-13AL	13-Gallon With Aluminum Tank

### BS-07 CHEETAH BEAD SEATER

- **"End of Tank" discharge design, flared discharge barrel and a 2" discharge valve for maximum bead seating power** ▪ Makes seating the most difficult bead not only safe but simple, fast and economical
- 5-gallon capacity, ASME certified tank
- Equipped with TSE's patented discharge system
- **SIZE:** 34"(L) x 12"(W) x 15"(H)



473-00207

ASCOT NO.	MFG. NO.	DESCRIPTION
473-00207	BS-07	BS-07 Cheetah Bead Seater

Please contact us for more detailed information regarding Cheetah Bead Seaters

TIRE & WHEEL SERVICE // BEAD BREAKERS, BEAD SEATING DEVICES

➔ Cheater Bead Seater Replacement Parts, Bead Seat Stand, Bead Seat Band Installer



**BEAD SEAT BAND INSTALLER**

- Uses hydraulic force to install bead seat bands in earthmover tires ▪ 25 tons of hydraulic force to ensure that all bead seat bands are installed effortlessly
- The angled plate rests against a large section of the tire, ensuring protection of the bead during installation
- **WEIGHT:** 40 lbs (18.1 kg)



429-11900

ASCOT NO.	MFG. NO.	DESCRIPTION
429-11900	11900	Bead Seat Band Installer



**EASY-LIFT™ BEAD SEATING STAND**

- Portable for field service, or can be bolted to the floor ▪ With hub facing out, simply roll mounted tire and wheel assembly to front of stand
- Push assembly onto crown - tire and wheel will automatically fall onto center of stand and rest with bead centered on bottom wheel flange
- Seat beads by inflating tire to 4 PSI (max.) ▪ Step around stand and easily lift assembly into vertical position
- Roll assembly into tire inflation safety cage for final inflation
- 24"H x 26"W x 27"L ▪ Made of high grade steel



473-36016

ASCOT NO.	MFG. NO.	DESCRIPTION	WEIGHT
473-36016	36016	Std. Crown for 8-3/4" Dia. Hubs	16,000 Lbs.
473-36017	36017	Large Crown for 11" Euro Hubs	12,000 Lbs.

**CHEETAH BEAD SEATER REPLACEMENT PARTS**

ASCOT NO.	MFG. NO.	DESCRIPTION	ASCOT NO.	MFG. NO.	DESCRIPTION
473-01104	'01.104	1-1/2" Pipe Nipple for Cheetah Bead Seaters	473-02107	'02.107	1-1/2" Lock Nut for Cheetah Bead Seaters
473-01106	'01.106	Pressure Gauge for Cheetah Bead Seaters	473-03102	'03.102	2" Discharge Valve for Cheetah Bead Seaters
473-01107	'01.107	3/4" - 1/4" Bushing for Cheetah Bead Seaters	473-03103	'03.103	2" Barrel for Cheetah Bead Seaters
473-01109	'01.109	Cheetah Air Hose Assembly	473-03104	'03.104	90° NPT for Cheetah Bead Seaters
473-01230	'01.230BT	Handle & Nut for Butterfly Valve for Cheetah Bead Seaters	473-03106	'03.106	Magnum II Barrel for Cheetah Bead Seaters
473-02102	'02.102	1-1/2" Discharge Valve for Cheetah Bead Seaters	473-04103	'04.103	Ball Valve for Cheetah Bead Seaters
473-02103	'02.103	1-1/2" Threaded Barrel for Cheetah Bead Seaters	473-05102	'05.102	Safety Release Valve for Cheetah Bead Seaters
473-02106	'02.106	Magnum I Barrel for Cheetah Bead Seaters	473-06813	'6813	Flared Barrel for BS-07 for Cheetah Bead Seaters



473-01104



473-02103



473-03104



473-01106



473-02106



473-03106



473-01107



473-02107



473-04103



473-01230



473-03102



473-05102



473-02102



473-03103



473-06813

TIRE & WHEEL SERVICE // BEAD BREAKERS, BEAD SEATING DEVICES



## Bead Seating Devices (cont.)

### TOMMY GUN BEAD BAZOOKA

- The new 2" MIS manual release valve delivers more power and is completely serviceable
- A 3-point airway connector allows for easy recharging
- The manual release lever is designed for optimal control
- Ergonomic grip for the best level of comfort
- Laser-etched size markings for easy identification
- Tank is coated inside and out to prevent rust
- 3-year warranty

Thanks to its new 2" MIS valve (patent pending), the Bead Bazooka Tommy Gun is able to inflate even the most stubborn tires.



473-00016

473-00019

Tank is coated inside and out to prevent rust

Gauge has been relocated to better protect it from damage

Easy-to-use MIS Manual Release Valve

Double-handle design for advanced control and safety during use

Ergonomic grip for comfort and ease of use

MORE POWER THAN BEFORE!

EASY RECHARGE

### BEAD BAZOOKA CHARGING STATION

- Allows techs to store the Bead Bazooka near the working area without leaving it on the floor
- Protects the tool from dropping, being kicked, broken components, etc.
- Helps keep the shop clean and safer
- Allows tech to fill the tank while it's in the holster and offers a direct view of the pressure gauge
- Accessory hooks are convenient for airlines, tire wedges, etc.

ALLOWS FOR EASY TANK FILL

PROTECTS THE TOOL



473-00101

ASCOT NO.	MFG. NO.	DESCRIPTION
473-00016	BB6LM	6-Liter Tommy Gun Bead Bazooka
473-00019	BB9LM	9-Liter Tommy Gun Bead Bazooka
473-29132	12913B2	2" Barrel for Tommy Gun Bead Bazooka

ASCOT NO.	MFG. NO.	DESCRIPTION
473-00101	BBH-01	Bead Bazooka Charging Station

TIRE & WHEEL SERVICE // BEAD BREAKERS, BEAD SEATING DEVICES





➔ Bead Saver System, Mount/Demount Tool, Bead Booster, Super Slick'em

**GAITHER'S BEAD SAVER SYSTEM**

▪ **By using simple principles of leverage, the Bead Saver System actually works with tire and rim to do the work for you** ▪ Patented design ▪ Safest, fastest, easiest way ever invented to change tubeless truck tires ▪ Guaranteed not to damage tire beads

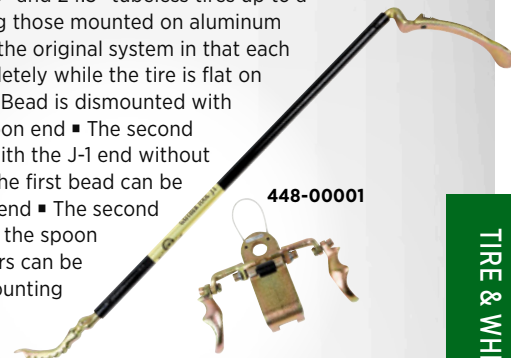


ITEM	ASCOT NO.	DESCRIPTION
<b>GAITHER'S BEAD SAVER SYSTEM PARTS</b>		
A	448-12902	Clevis (Demounting Tool)
B	448-12883	Right Wing For Clevis
C	448-12884	Left Wing For Clevis
D	448-12897	Bolts For Clevis Wing (Set Of 2)
E	448-12903	Rollers For Clevis (Black & White Roller Including Pins)
F	448-12909	Wire Handle For Clevis (Includes Screws)
G	448-12892	On/Off Plate
H	448-12893	Wedge
I	448-12899	Beavertail
J	448-12901	Rollers For Beavertail (Set Of 2 Includes Screws)
K	448-12886	Lever Bar
L	448-22886	Crook End For Lever Bar
M	448-32886	Spoon End For Lever Bar
N	448-12894	Beadkeeper (1 Included In Standard Set)
O	448-12898	Clevis Assist (Not Included In Standard Set)
P	448-12900	Heavy Duty Carrying Case
Q	448-12904	Gaither's Super Slick'em (Replacement Sold by The Case) - 4 Gallons w/Applicator
R	448-12905	Instructional Video (Available in PAL Also)

ASCOT NO.	MFG. NO.	DESCRIPTION
448-12880	12880	Bead Saver System

**GAITHER J1 MOUNT/DEMOUNT TOOL**

▪ **Slightly altered and condensed version of the original Bead Saver System** ▪ 2-piece system that mounts and dismounts all standard 19.5", 22.5" and 24.5" tubeless tires up to a 315/80R22.5, including those mounted on aluminum wheels ▪ Differs from the original system in that each process is done completely while the tire is flat on the ground ▪ The first Bead is dismounted with the clevis & crook/spoon end ▪ The second Bead is dismounted with the J-1 end without picking the tire up ▪ The first bead can be mounted with the J-1 end ▪ The second Bead is mounted with the spoon end ▪ Two Beadkeepers can be used to assist with mounting



ASCOT NO.	MFG. NO.	DESCRIPTION
448-0001	J1	Mount/Demount Tool

**5-GALLON BEAD BOOSTER**

▪ **Creates a blast of air used for seating tubeless tire beads** ▪ Release valve safety lock prevents inadvertent discharge ▪ Powder-coated inside and out to protect from rust and deterioration caused by moisture ▪ Double Barrel directs the air around the tire for a better "lift" ▪ Safety pop-off valve prevents overloading with too much air pressure



ASCOT NO.	MFG. NO.	DESCRIPTION
473-00005	GB-5Z	5-Gallon Bead Booster



**GAITHER SUPER SLICK'EM™**

▪ **Gaither's Super Slick'em™ should be applied to all tires before being mounted or before deflation if being dismounted** ▪ Super Slick'em™ is a special non-water based lubricant that penetrates and aids in breaking the tire bead from the wheel by eating away rust and grease. Because it does not contain water, Super Slick'em™ will not freeze or cause rust to form ▪ **SUPER SLICK'EM™ 12904 INCLUDES:** 4-1 gallon (3.8 liter) containers and 1 applicator bottle



ASCOT NO.	MFG. NO.	DESCRIPTION
421-12904	G12904	Gaither Super Slick'em™

421-12904

TIRE & WHEEL SERVICE // BEAD BREAKERS, BEAD SEATING DEVICES

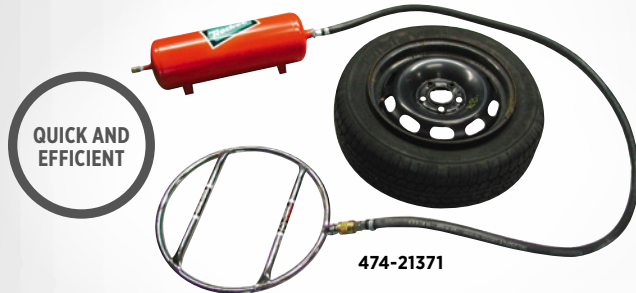
➔ **Bead Seating System, Bead Seater, Bead Expanders, Beadkeepers**

## Bead Seating Devices (cont.)

### B&J STANDARD DUTY BEAD SEATING SYSTEM



▪ **Provides an efficient and quick way to seat the beads of truck tires** ▪ Easy to operate-twist valve with man-size handle ▪ **INCLUDES:** 8 feet of 1" diameter hose, hand-operated valve and choice of one ring-specify ring part number



474-21371

ASCOT NO.	MFG. NO.	DESCRIPTION
474-21371	153210	OMEGA JET RING; 20" - 24.5"
474-21372	1531211	OMEGA JET RING; 17.5" - 19.5"
474-21373	1531212	OMEGA JET RING; 14.5" - 16.5"
474-21374	1531213	OMEGA JET RING; 17.5" Only
474-21375	1531214	OMEGA JET RING; 22.5" Only
474-31303	1531303	8' of 1" Diameter Hose and Valve Assembly
474-31701	1531701	20-Gallon Surge Tank
474-25010	153250-10	OMEGA JET Model 250 Universal (20"-24.5") - Includes Hose & Tank

### AIR BLAST BEAD SEATER FOR SMALL TIRES

▪ **Fast and easy way to seat beads in one simple operation** ▪ Seat the bead on most small tubeless tires with rims ranging from 4" to 12" ▪ **ONE-MAN OPERATION:** just point and release



473-31440

ASCOT NO.	MFG. NO.	WEIGHT
473-31440	31440	5.6 Lbs.

### PNEUMATIC BEAD EXPANDERS

▪ **Fits most bias ply passenger tires** ▪ Pliable neoprene rubber tube encased in tough nylon cover ▪ Withstands contact with oil, grease, solvents and acid



471-31432

ASCOT NO.	MFG. NO.	MIN./MAX. DIAM.	TUBE DIAM.	WEIGHT
471-31432	31432	24"-34"	2-1/4"	2.8 Lbs.
471-31433	31433	22"-32"	3/4"	.75 Lbs.

## Beadkeepers



### YELLOW RUBBER COATED BEADKEEPER

▪ **Keeps truck tire bead from slipping during mounting of top bead** ▪ Rubber coated steel construction ▪ Will not scratch aluminum wheels ▪ Great for hard to mount tires, a must for all super singles ▪ *Equivalent to Gaither 12894C & ESCO 70140*



448-12894

ASCOT NO.	MFG. NO.	DESCRIPTION
448-12894	12894C	Yellow Rubber Coated Beadkeeper

### BLUE WIDE MOUTH RUBBER COATED BEADKEEPER

▪ **Wider mouth works on newer, wider Alcoa wheels** ▪ Keeps truck tire bead from slipping during mounting of top bead ▪ Rubber coated steel construction ▪ Will not scratch aluminum wheels ▪ Great for hard to mount tires, a must for all super singles ▪ **Equivalent to Gaither 12894-CW**



448-32894

ASCOT NO.	MFG. NO.	DESCRIPTION
448-32894	12894-CW	Wide Mouth Blue Rubber Coated Beadkeeper

### STEEL BEADKEEPER

▪ **THE ORIGINAL BEADKEEPER** ▪ Used to hold a tire bead in place during the mounting process ▪ Eliminates the need to stand on the tire and/or use a second mounting bar



448-22894

ASCOT NO.	MFG. NO.	DESCRIPTION
448-22894	12894	Steel Beadkeeper

### BEADKEEPERS-ON-A-ROPE

▪ **Used to hold the tire in place while mounting the second bead** ▪ These tools eliminate the dangerous job of standing on the tire in order to mount it ▪ After the first bead is mounted, simply place two Beadkeepers on the flange of the wheel and spread them apart as far as possible; Use the Spoon End of the bar to mount a small part of the bead and slide the closest Beadkeeper to the bar; Repeat this step until the entire second bead is mounted



448-42894

ASCOT NO.	MFG. NO.	DESCRIPTION
448-42894	12894-P	Beadkeepers-On-A-Rope

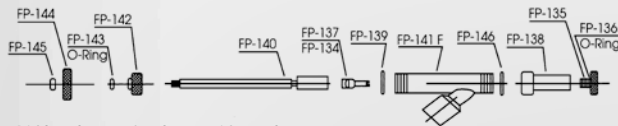
TIRE & WHEEL SERVICE // BEAD BREAKERS, BEAD SEATING DEVICES

# Chloride Pumps

## VALVE ADAPTER GUN



▪ 1/2" female pipe thread ▪ Will attach to any calcium tire filling pump ▪ Will extract valve core from a standard bore valve or core housing from tractor valve ▪ Securely holds valve core or core housing up in the gun body during the filling or evacuation of liquid from tire



ASCOT NO.	MFG. NO.	DESCRIPTION
<b>VALVE ADAPTER GUN PARTS</b>		
464-00134	FP-134	Large Bore Core Remover
464-00135	FP-135	Adapter For Standard Valve
464-00136	FP-136	O-Ring For FP-135
464-00137	FP-137	Standard Valve Core Remover
464-00138	FP-138	Ejector Union With FP-136 O-Ring
464-00139	FP-139	Gasket
464-00140	FP-140	Stem
464-00141	FP-141F	Adapter Body
464-00142	FP-142	Stem Sealing Nut
464-00143	FP-143	O-Ring For FP-142
464-00144	FP-144	Hand Wheel
464-00145	FP-145	Lock Nut
464-00146	FP-146	Teflon Gasket

ASCOT NO.	MFG. NO.	DESCRIPTION
464-00310	310	Valve Adapter Gun

## CALCIUM CHLORIDE PUMP

▪ Now available with polyvinyl valve (Model #10509) or anodized aircraft aluminum valve (Model #10509M) ▪ Pumps 34 gallons of calcium chloride per minute ▪ Newly designed valve will not leak ▪ Spring reinforced hoses for fill and evacuate ▪ Comes complete with valve adapters for all valves (large bore and standard) ▪ Gauges are protected ▪ Unit is portable or can be mounted in tire service trucks ▪ Double diaphragm pump, 1 to 1 ratio ▪ 10' hoses gives plenty of room to operate ▪ Includes hoses & calcium tire filled gun ▪ **USA MADE PUMP**



475-11590



ASCOT NO.	MFG. NO.	DESCRIPTION
475-10509	10509	Calcium Chloride Pump with Polyvinyl Valve
475-11590	10509M	Calcium Chloride Pump with Aircraft Aluminum Valve

## Chloride Pumps, Valve Adapter Gun

## "WONDER PUMP" PNEUMATIC DOUBLE DIAPHRAGM CALCIUM CHLORIDE PUMP

▪ No lubrication required ▪ Self-priming; non-stalling; low noise level ▪ Diaphragms have no stress points and "less flex" for longer life ▪ No gradual loss of pump performance due to wear ▪ Can run dry indefinitely ▪ Protected by an air filter/regulator ▪ **4-WAY VALVE:** 1/4 turn reverses the flow - no need to change hoses ▪ 35 gallon per minute free flow



475-18001

ASCOT NO.	MFG. NO.	DESCRIPTION
<b>"WONDER PUMP" PARTS &amp; ACCESSORIES</b>		
475-13011	30A-11	310 Calcium Gun
475-13018	30A-18	3/4" Brass Quick Coupler-Hose Saver
475-13019	30A-19	3/4" Brass Plug - Hose Saver (Needed for 30A-18)
475-13021	30A-21	1/2" Brass Quick Coupler - Calcium Gun
475-13022	30A-22	1/2" Brass Plug - Calcium Gun (Needed for 30A-21)
475-13026	30A-26	1/8" Back Mount Air Gauge - 0-100 PSI
475-13027	30A-27	2-1/2" Dia. S.S. 1/4" Back Mount Press/Vac Gauge - 30/0/150 Glycerin Filled
475-82515	682515	Extra Large Exhaust Muffler
475-13028	30A-28	3/4" Brass 4-Way Directional Valve w/ O-Ring Seals w/ Handle
475-13029	30A-29	Handle for 30A-28
475-13030	30A-30	10' Supply Hose (3/4" x 1" MPT Ends) 300 PSI - Wingfoot
475-13031	30A-31	15' Fill/Evac Hose (3/4" x 1/2" MPT Ends) 300 PSI - Wingfoot
475-13032	30A-32	PVC Suction Bypass Hose for Silver Pump
475-13033	30A-33	1" FPT Stainless Steel Strainer for 30A-30 Prior to 2002
475-13034	30A-34	3/4" FPT Stainless Steel Strainer for Current 30A-Plus
475-12532	25A-32	PVC Bypass Hose for Black Pump

ASCOT NO.	MFG. NO.	DESCRIPTION
475-18001	30A Plus	1" Capacity Standard Package

TIRE & WHEEL SERVICE // CHLORIDE PUMPS

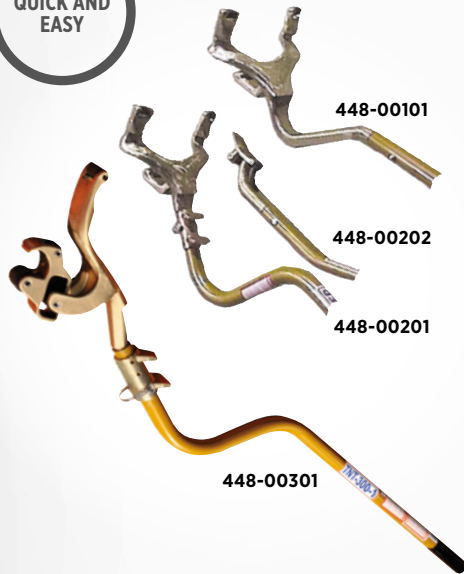
→ Mount/Demount tools, Tire Changing System, Truck Bead Holder

# Tire Irons



## GOLDEN TOOL TUBELESS TRUCK TIRE MOUNT/DEMOUNT TOOL

▪ Demounts most tubeless tires in 8 seconds with ease - remount them in 20 seconds with equal ease - all without the need to lift tire and rim to remove rear bead ▪ Demounts/mounts 17.5" to 24.5" tires ▪ **APPLICATIONS:** Use on all tubeless truck tires including super single/duplex tires, radial and bias ▪ For Dayton-type wheels (centerless) and Budd type disc wheels ▪ Eliminates the need to lift tire and rim to remove the bottom bead, preventing possible strain or even serious injury



448-00101

448-00202

448-00201

448-00301

ASCOT NO.	MFG. NO.	DESCRIPTION
448-00100	TNT-100	Tire Mount/Demout Tool Complete
448-00101	TNT-100-1	Demount Tool Only
448-01008	TNT-100-8	Roll Pins for TNT-9 (Need 2)
448-01009	TNT-100-9	Small Tire Roller (Need 2)
448-10010	TNT-100-10	Main Roller
448-10011	TNT-100-11	Roll Pin For TNT-100-1 (Need 1)
448-00200	TNT-200	Super Single Tire Mount/Demount Tool
448-00201	TNT-200D	Super Demount Tool
448-00202	TNT200M	Single Mount Tool
448-00301	TNT-300-1	New 445 Super Single Demount Tool



## GOLDEN BUDDY TIRE CHANGING SYSTEM

▪ Mount and demount tool assemblies for 22.5 & 24.5 tires/wheels ▪ Heavy duty steel construction ensures long life ▪ Nylon rollers protect the bead ▪ Bead keeper ▪ **WEIGHT:** 32 lbs. (14.5 kg) ▪ Sold as a complete set



448-12320

ASCOT NO.	MFG. NO.	DESCRIPTION
448-12320	71050	Golden Buddy Tire Mount/Demount Tool Set
448-22320	71051	Golden Buddy Dismount Assembly
448-32320	71052	Golden Buddy Mount Tool Assembly

## EASY BUDDY TIRE DEMOUNT TOOL

▪ Mount and dismount tire assemblies for 22.5 and 24.5 tires/wheels ▪ Easy-to-follow instructions ▪ **WEIGHT:** 35 lbs. (16 kg) ▪ Includes top bead removal tool and bottom bead removal tool ▪ Includes Rim Protector to prevent rim scarring



ASCOT NO.	MFG. NO.	DESCRIPTION
448-71000	71000	Easy Buddy Tire Demount Tool

## STEEL TRUCK BEAD HOLDER

▪ Clamps securely to the wheel to prevent tire from "walking" ▪ Eliminates the use of vise grips which can damage wheels ▪ For use with automatic tire changers and/or manual tire changing tools ▪ Heavy duty steel construction



448-00010

ASCOT NO.	MFG. NO.	DESCRIPTION
448-00010	BJ-BP10	Steel Truck Bead Holder

TIRE & WHEEL SERVICE // MOUNT/DEMOUNT TOOLS



**Ken-Tool®**  
WHEREVER TIRES ARE CHANGED™

**ASCOT™**  
Supply Corporation

A proud partner with ASCOT™  
for over **50 YEARS!**

There is more to Ken-Tool® than  
tire irons & 4-way lug wrenches!



36012



Truck Tire  
Inflation Cages



36019

*Building on a rich history of  
over 95 years of dependable  
American made quality and  
customer satisfaction, we  
are still leading the way  
with innovative  
solutions.*



36005



36006



T45A® Tubeless Truck Tire  
Mount / Demount Irons

Dual Wheel Separator 34549

Duck-Billed Bead Breaking Wedges

Tire Valve Installer 29850

Air Brake Slack Adjusters Set No. 33210

reCore®  
TPMS Stem Repair  
Kit 29975



Shark Fin™  
Dual Wheel  
Separation  
Bag 34555





## Tire Irons (cont.)

### BLUE COBRA™ TRUCK TIRE DEMOUNT TOOL

- Ergonomic shaped steel handle with no-slip grip for optimum leverage
- APPLICATIONS: Change nearly any 20", 22.5" and 24.5" tube-type and tubeless truck tires, up to a 13" wide one-piece wheel



ASCOT NO.	MFG. NO.	LENGTH	WEIGHT
402-35440	35440	54"	22 Lbs.

### TIRE MOUNT/DEMOUNT IRONS

- Many sizes for use on truck, agricultural and industrial tires
- APPLICATIONS: Straight and offset tire irons for use on large, wide-base tires; T45 series for use on standard truck tires
- New 402-45005 allows the professional to lift the bead over the rim with less effort than conventional methods



ASCOT NO.	MFG. NO.	LENGTH	STOCK	WEIGHT
402-45003	T45A	37"	3/4"	4.6 Lbs.
402-45005	T45A-2000K	38"	3/4"	5 Lbs.
402-45004	T45HD	41"	7/8"	7 Lbs.
402-47001	T47A	52"	1"	11 Lbs.

### EASY-WAY™ TUBELESS TRUCK TIRE DEMOUNTING SYSTEM

- Demount tubeless truck tire in 8 seconds
- Never lift tire to demount rear or bottom bead
- Eliminates bead damage
- APPLICATIONS: Handles all tubeless truck tires 16.5"-24.5" diameter and some super single "floats"
- No damage to aluminum or painted wheels



ASCOT NO.	MFG. NO.	DESCRIPTION
402-70100	70100	Complete Kit
402-70101	70101	Top Bead Tool
402-70102	70102	Bottom Bead Tool
402-70103	70103	Rim Protector

### CLASSIC TUBELESS TIRE IRON

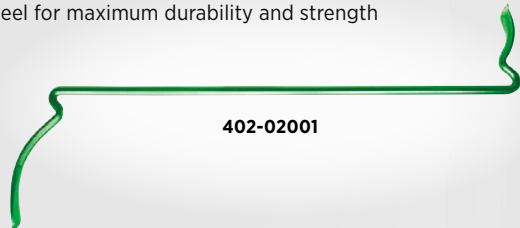
- Ken-Tool's patented designs offer one-piece construction and assure long life for many tire changing applications
- Tip ends insert easily and will not cut or rip bead or sidewall
- These designs make it easier to mount and demount tires without changing the way the tool is used
- MOUNT END: Precision-forged knob grips rim. Tip designs won't slip during tire mounting. Special curve design always grabs the bead edge
- DEMOUNT END: Precision-forged angled tip slides between bead and rim easily. Forged design won't slip when demounting the second bead



ASCOT NO.	MFG. NO.	LENGTH	STOCK	WEIGHT
402-34645	T45AC	37"	3/4"	4.6 Lbs.
402-34649	T45AS	52"	7/8"	8.25 Lbs.

### TIRE DEMOUNT TOOL

- Demounts both beads on most truck tires with the need for lifting the tire/wheel assembly off the ground and then dropping it
- Heat-treated alloy steel for maximum durability and strength



ASCOT NO.	MFG. NO.	LENGTH	STOCK	WEIGHT
402-02001	T2001	39"	3/4"	6.5 Lbs.

### TIRE MOUNT TOOL

- Wing shaped designed to stop against rim, remove itself from between rim and bead
- Small end gets under stretched bead for last pull



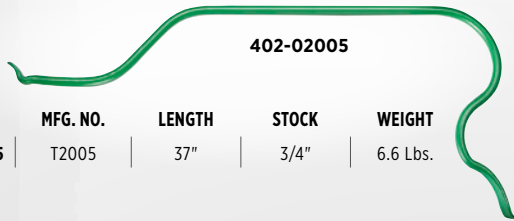
ASCOT NO.	MFG. NO.	LENGTH	STOCK	WEIGHT
402-02002	T2002	38"	11/16"	4 Lbs.



Tire Mount/Demount Tools, Tire Spoons, Wheel Lifting Bar

**SUPER SERPENT MOUNT TOOL**

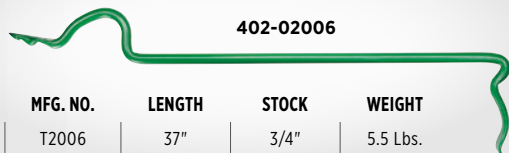
▪ It may seem funny looking, but every inch of this innovative design is purely serious ▪ Delivers Twice the leverage of any "Straight-type" tire mounting tool



ASCOT NO.	MFG. NO.	LENGTH	STOCK	WEIGHT
402-02005	T2005	37"	3/4"	6.6 Lbs.

**SUPER SERPENT DEMOUNT TOOL**

▪ At only 5-1/2 pounds, this unique, lightweight demount tool for super singles can be lugged around on a fingertip ▪ Delivers incredible leverage right where it's needed



ASCOT NO.	MFG. NO.	LENGTH	STOCK	WEIGHT
402-02006	T2006	37"	3/4"	5.5 Lbs.

**TIRE SPOONS**

▪ General purpose tire irons for all mounting and demounting needs ▪ APPLICATIONS: Use 18" and 24" spoons to mount or demount passenger car, motorcycle, ATV and light truck tires; 30" spoons provide enough strength and leverage to work on large truck, bus, off-road vehicle, tractor and aircraft tires



ASCOT NO.	MFG. NO.	LENGTH	STOCK	WEIGHT
<b>A. STRAIGHT</b>				
402-32101	T1X	18"	11/16"	1.8 Lbs.
402-32119	T19	24"	11/16"	2.5 Lbs.
402-33022	33022	30"	3/4"	3.4 Lbs.
402-33219	T19A	30"	11/16"	3 Lbs.
402-33238	T38	30"	7/8"	4.8 Lbs.
<b>B. DROP-CENTER</b>				
402-02100	T21R	18"	11/16"	1.8 Lbs.
402-02101	T21F	24"	11/16"	2.5 Lbs.
402-02102	T21HD	30"	7/8"	4.5 Lbs.
402-33020	33020	30"	11/16"	3.1 Lbs.
402-33024	33024	30"	3/4"	3.4 Lbs.
<b>C. CURVED</b>				
402-31820	31820	18"	11/16"	1.8 Lbs.
402-32102	T2X	18"	11/16"	1.8 Lbs.
402-32120	T20	24"	11/16"	2.4 Lbs.
402-32420	32420	24"	11/16"	2.5 Lbs.
402-33021	33021	30"	11/16"	3.1 Lbs.
402-33052	33052	30"	3/4"	3.1 Lbs.
402-33062	33062	30"	7/8"	3.4 Lbs.
402-33220	T20A	30"	11/16"	3.1 Lbs.
402-33239	T39	30"	7/8"	4.5 Lbs.

**TUBELESS TIRE IRON SETS**

▪ Sets provide all irons necessary for a variety of tire changing applications ▪ APPLICATIONS: Use C bar with the B extension bar for easier use on large, wide-base truck tires; Use on standard and large truck tires, including industrial, farm, buses and tractors

ASCOT NO.	MFG. NO.	DESCR.	LENGTH	STOCK	WEIGHT
<b>ADAPTER PLUGS</b>					
402-46000	T46	Tire Iron Set. INCLUDES: T46A, T46B, T46C	—	3/4"	12 Lbs.
402-46001	T46A	Med. Duty Mount/Demount Iron	36"	3/4"	4.5 Lbs.
402-46002	T46B	Mount/Demount Iron	36"	3/4"	4.5 Lbs.
402-46003	T46C	Offset Bar For Deep Well Tires	22"	3/4"	3 Lbs.
<b>HEAVY</b>					
402-47000	T47	Tire Iron Set. INCLUDES: T47A, T47B, T47C	—	1"	29 Lbs.
402-47001	T47A	Ultra Duty Mount/Demount Iron	52"	1"	11 Lbs.
402-47002	T47B	Mount/Demount Iron	49-1/2"	1"	11 Lbs.
402-47003	T47C	Offset Bar For Deep Well Tires	27"	1"	6.66 Lbs.



**IRONMAN™ ERGONOMIC WHEEL LIFTING BAR**

▪ Easily and safely lift heavy, awkward truck tire and wheel assemblies ▪ Extremely useful in outdoor conditions when truck tire and wheel assemblies can become wet & slippery ▪ Protect your workers and yourself: reduce injuries & claims, keep insurance premiums down ▪ Specially designed forged ends work from either side of the wheel assembly as it lays flat ▪ APPLICATIONS: Lift all sizes and types of small and large heavy truck wheels: Standard sizes including 22.5" and 24.5" wheels, plus European (which have 1" lug holes), Super Wide and even the Super Single (a 340 Lb. assembly) size



The Ironman™ Ergonomic Wheel Lifting Bar in use.

ASCOT NO.	MFG. NO.	LENGTH	WEIGHT
402-34950	34950	58"	10 Lbs.

TIRE & WHEEL SERVICE // MOUNT/DEMOUNT TOOLS



## Tire Irons (cont.)

### NINETEEN-FIVE™ TIRE MOUNTING & DEMOUNTING TOOL SET FOR 19.5" TRUCK TIRES

- **New tire bar uniquely designed to work on hub side of wheel, where hub protrudes above rim** ▪ Specially designed ends manipulate tire with less effort ▪ Tools are powder coated to protect from rust and corrosion ▪ Forged from high-grade carbon steel and heat-treated for longlasting strength and durability
- **APPLICATIONS:** Specially designed Bead Holder to hold bead on 19.5" aluminum wheels
- Solid brass Bead Holder for steel wheels
- Aluminum Wheel Protector - thick leather pad helps protect rims from marring and scratching

ASCOT NO. MFG. NO. DESCRIPTION LENGTH WEIGHT

NINETEEN-FIVE™ TIRE MOUNTING & DEMOUNTING TOOL SET				
402-33195	33195	Nineteen-Five™ Tire Mounting and Demounting Set. <b>INCLUDES:</b> 31710, 31810, 33196, 33199		
472-31710	31710	Bead Holder for Steel Wheels - Solid Brass	4-1/2"	2.5 Lbs.
472-31810	31810	Aluminum Wheel Protector - Leather	6"	3.4 Lbs.
402-33196	33196	Bead Holder for 19.5" Aluminum Wheels	7-1/2"	3 Lbs.
402-33199	33199	Tire Mounting/ Demounting Tool	38"	2.5 Lbs.



472-31810



472-31710



402-33196

## Small Mount/ Demount Tools

Design based on popular European styles. Extended length of the flat curved sliding surface provides comparable mounting ability of much longer traditional tire irons.

### TIRE IRONS - SMALL TIRE

- **Pro tire changing tools for small tires** ▪ **APPLICATIONS:** Ideal for mounting and demounting motorcycle, ATV, lawn, golf cart and small tires by hand ▪ Rounded ends will not pinch tube



ASCOT NO.	MFG. NO.	LENGTH	STOCK	WEIGHT
402-00050	T5	16"	.8 Lbs	
402-00060	T6A	16-1/2"	5/8"	1.5 Lbs.
402-00080	T8	16"	.8 Lbs	
402-00160	T16A	16"	7/16"	.7 Lbs.
402-00900	T9A	9"	7/16"	.4 Lbs.
402-01160	T16C	2 Piece Set. <b>INCLUDES:</b> (2) T16A 16" Bars		
402-01900	T9C	2 Piece Set. <b>INCLUDES:</b> (2) T9A 9" Bars		

## BEAD HOLDER

- **Holds the bead in place against the wheel when mounting the tire on the wheel** ▪ 31713 Bead Holder works on Super Singles and Super Wides



472-31710

472-31713

ASCOT NO.	MFG. NO.	MATERIAL	STOCK	WEIGHT
472-31710	31710	Solid Brass	1.4 Lbs.	1.8 Lbs.
472-31713	31713	Aluminum Bead Holder - Works on Super Singles		

## ALUMINUM WHEEL PROTECTOR

- **Protects wheel rims from damage**
- U.S. Patent No. 6,991,018

ASCOT NO.	MFG. NO.	WEIGHT	
472-31810	31810	12 Lbs. (5.4 kg)	472-31810



## MOTORCYCLE/ SMALL WHEEL

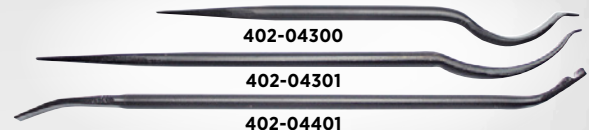


402-04311

ASCOT NO.	MFG. NO.	LENGTH	STOCK	WEIGHT
402-04311	T43A	15"	3/4"	1.8 Lbs.

## EUROPEAN STYLE TOOLS

- **APPLICATIONS:** Use on car, motorcycle, truck and agricultural tires ▪ Designed for mounting and demounting tires ▪ Best if used in pairs



ASCOT NO.	MFG. NO.	LENGTH	STOCK	WEIGHT
402-04300	T43C	21"	7/8"	3.1 Lbs.
402-04301	T43D	30"	7/8"	4.5 Lbs.
402-04401	T44	31"	7/8"	5.3 Lbs.

TIRE & WHEEL SERVICE // MOUNT/DEMOUNT TOOLS





# Lock Ring Tools

## TRUCK LOCK RING REMOVER

▪ **APPLICATIONS:** Designed for small diameter wheels



402-32123

ASCOT NO.	MFG. NO.	LENGTH	DIAMETER	WEIGHT
402-32123	T23	24"	11/16"	2.4 Lbs.
402-33223	T23A	30"	11/16"	3.1 Lbs.

## COMBINATION RIM/RING TOOL

▪ Flat tapered end ▪ **APPLICATIONS:** Ideal for all around ring and rim work



402-33224

ASCOT NO.	MFG. NO.	LENGTH	DIAMETER	WEIGHT
402-33224	T23B	23-1/2"	11/16"	2.4 Lbs.

## RIM LOCK TOOL

▪ **APPLICATIONS:** For servicing wide base rims



402-32125

ASCOT NO.	MFG. NO.	LENGTH	DIAMETER	WEIGHT
402-32125	T25	18"	5/8"	1.8 Lbs.

## SPECIAL LOCK RING TOOL

▪ Long tapered curved end ▪ **APPLICATIONS:** For continuous side rings



402-32127

ASCOT NO.	MFG. NO.	LENGTH	DIAMETER	WEIGHT
402-32127	T27	18"	11/16"	1.8 Lbs.

## LOCK RING TOOL

▪ **APPLICATIONS:** Removes continuous side rings on two-piece truck rims



402-32128

ASCOT NO.	MFG. NO.	LENGTH	DIAMETER	WEIGHT
402-32128	T27A	18"	11/16"	1.8 Lbs.

## HEAVY DUTY LOCK RING TOOL

▪ **APPLICATIONS:** Use for multi-piece wheels, especially hub type



402-34648

ASCOT NO.	MFG. NO.	LENGTH	DIAMETER	WEIGHT
402-34648	T48A	37"	3/4"	4.6 Lbs.

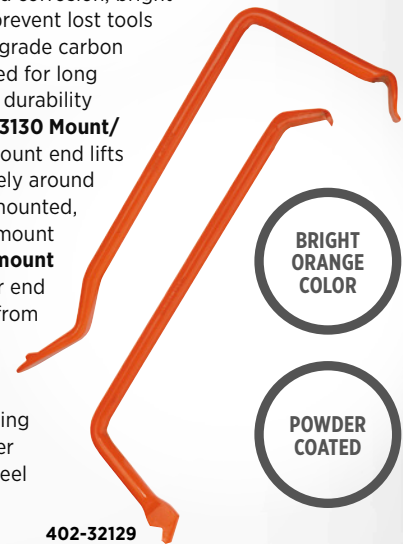
## INDUSTRIAL WHEEL LOCK RING TOOL SET

▪ **Helps prevent injury, easier to keep hands safely outside of press cage** ▪ Tools are powder coated to protect from rust and corrosion; bright orange color helps prevent lost tools

▪ Forged from high-grade carbon steel and heat-treated for long lasting strength and durability

▪ **SET INCLUDES: #3130 Mount/Demount Tool:** Demount end lifts split ring progressively around wheel until fully demounted, mount end used to mount split ring;

▪ **#3132 Demount Prep Tool:** Separator end separates split ring from solid flange ring to form gap, pry-out end reaches behind slotted end of split ring to pry in out and over the flange of the wheel



402-32129

ASCOT NO.	MFG. NO.	DESCRIPTION	LENGTH	WEIGHT
<b>INDUSTRIAL WHEEL LOCK RING TOOL SET PARTS</b>				
402-32130	32130	Mount/Demount Tool	15-3/4"	1.8 Lbs.
402-32131	32131	Demount Prep Tool	15-1/2"	1.5 Lbs.

ASCOT NO.	MFG. NO.	DESCRIPTION
402-32129	32129	2 Pc. Industrial Wheel Lock Ring Set

TIRE & WHEEL SERVICE // MOUNT/DEMOUNT TOOLS

→ Wooden Handle Hammers, Fiberglass Handle Hammers, All-Weather Hammers

# Heavy Duty Hammers



## WOODEN HANDLE HAMMERS

▪ Used for mounting and demounting tires ▪ APPLICATIONS: Makes tire changing easier for passenger car, truck, bus, farm tractor and aircraft tires



ASCOT NO.	MFG. NO.	HANDLE NO.	LENGTH	WEIGHT
425-35321	T34	T11CH	17"	4.8 Lbs.
425-35323	T35	T11CH	16-1/2"	5.5 Lbs.
425-35325	T36	T11CH	16-1/2"	5.8 Lbs.
425-35105	T34RH	Rubberhead Replacement		

## FIBERGLASS HANDLE HAMMERS



ASCOT NO.	MFG. NO.	HANDLE NO.	LENGTH	HEAD WEIGHT	WEIGHT
425-35421	TG34	TG11CH	18"	5.5 Lbs.	6 Lbs.
425-35423	TG35	TG11CH	18"	4.8 Lbs.	6.6 Lbs.
425-35425	TG36	TG11CH	18"	5.8 Lbs.	6 Lbs.

## ALL-WEATHER HEAVY DUTY HAMMERS

▪ Handles are constructed with a solid core with thousands of fiberglass strands and a unique resin to make them super strong, all-weather, chemical and insect-resistant ▪ Ergonomic non-slip grips for slippery conditions ▪ MADE IN THE USA



ASCOT NO.	MFG. NO.	DESCRIPTION	DETAILS
426-10062	10062	2 lb. Dead Blow Hammer	Engineered to perform better than rubber or plastic face hammers. Shot-loaded composite interior cavities of these Dead Blow hammers are fully encased in a tough polymer outer jacket. Free flowing inner shot concentrates striking power and increases driving force creating a dead blow effect.
426-10064	10064	4 lb. Dead Blow Hammer	
426-10066	10066	2 lb. Dead Blow Hammer w/ Steel face	
426-27804	27804	8 lb. Slugging Hammer	Features drop forged, heat treated and tempered carbon steel sledge heads with dual machined striking faces and chamfers.
426-28045	28045	4 lb. Hand Drilling Hammer	High quality drop forged, heat treated and tempered carbon steel heads with a black crown and polished striking faces.
426-29045	29045	4 lb. Cross-Pein Hammer	High quality forged, heat treated and tempered heads with one radiused pein.
426-30025	30025	2.5 lb. Brass Hammer	High quality cast brass head with polished striking face.

TIRE & WHEEL SERVICE // TIRE SERVICING TOOLS



➔ Wooden Handle Hammers, Fiberglass Handle Hammers, Rubber Mallet, Sledge Hammer, Wedges

# General Purpose Hammers & Wedges

## WOODEN HANDLE HAMMERS

▪ Designed for tire service in variety of sizes



ASCOT NO.	MFG. NO.	HANDLE NO.	LENGTH	WEIGHT
426-35311	T11B	T11BH	14-1/2"	4.5 Lbs.
426-35317	T33R	T11HN	14"	2.3 Lbs.

## FIBERGLASS HANDLE HAMMERS



ASCOT NO.	MFG. NO.	HANDLE NO.	LENGTH	WEIGHT
426-35411	TG11B	TG11BH	16"	4.8 Lbs.
426-35417	TG33R	TG31H	16"	2.5 Lbs.

## DOUBLE FACED SLEDGE HAMMER

▪ High carbon steel, heat treated ▪ Machined, polished face ▪ Top grade U.S. hickory handle



ASCOT NO.	MFG. NO.	HANDLE LENGTH.	FACE	EYE SIZE	WEIGHT
428-37302	84H-2	15"	1-1/2"	3/4" x 1"	2 Lbs.
428-37304	84H-4	15"	1-3/4"	3/4" x 1"	4 Lbs.
428-37308	84H-8	32"	2"	1" x 1-3/8"	8 Lbs.
428-37310	84H-10	36"	2-1/8"	1" x 1-3/8"	10 Lbs.
428-37312	84H-12	36"	2-1/8"	1" x 1-3/8"	12 Lbs.
428-37316	84H-16	36"	2-3/8"	1" x 1-3/8"	16 Lbs.
428-37320	84H-20	36"	3"	2" x 1-1/2"	20 Lbs.

## DUCK BILLED BEAD BREAKING WEDGES - WOOD HANDLED



ASCOT NO.	MFG. NO.	HANDLE NO.	LENGTH	WEIGHT
424-35327	T11D	T11DH	17"	4.8 Lbs.
424-35329	T11E	T11EH	30"	9.2 Lbs.

## DUCK BILLED BEAD BREAKING WEDGES- FIBERGLASS HANDLED



ASCOT NO.	MFG. NO.	HANDLE NO.	LENGTH	WEIGHT
424-35427	TG11D	TG11DH	18"	4.8 Lbs.
424-35429	TG11E	TG11EH	32"	9.1 Lbs.

## DUCK BILLED POLYMER HANDLED BEAD BREAKING WEDGE

▪ Hump design prevents tool from wedging between rim and bead ▪ Breaks bead with little or no prying ▪ New polymer handle design with fiberglass core



ASCOT NO.	MFG. NO.	HANDLE NO.	LENGTH	WEIGHT
424-35460	T11K	T11KH	32"	10.5 Lbs.
429-35230	T11KH	Replacement Handle for T11K		

## 2 LB. RUBBER MALLET

▪ Rubber head prevents marring surfaces



ASCOT NO.	MFG. NO.	HANDLE LENGTH	WEIGHT
426-35310	T32	17"	2 Lbs.

TIRE & WHEEL SERVICE // TIRE SERVICING TOOLS



## General Purpose Hammers & Wedges (cont.)

### CROSS-PEIN/ BLACKSMITH HAMMER



426-37103

ASCOT NO.	MFG. NO.	HANDLE LENGTH.	FACE	EYE SIZE	WEIGHT
426-37103	85H-3	16"	1-5/8"	1" x 1-3/4"	3 Lbs.

### NEW ENGLAND PATTERN HAND- DRILLING HAMMERS



426-37003

ASCOT NO.	MFG. NO.	HANDLE LENGTH.	FACE	EYE SIZE	WEIGHT
426-37003	80H-3	10-1/2"	1-1/2"	1" x 3/4"	3 Lbs.
426-37004	80H-4	10-1/2"	1-5/8"	1" x 3/4"	4 Lbs.

### TIRE KNOCKER



426-35110

ASCOT NO.	MFG. NO.	HANDLE LENGTH.	WEIGHT
426-35110	35110	18"	.7 Lbs.

### DEAD BLOW HAMMERS

- **Economy version for DIYers or home workshops** ▪ One-piece polypropylene outer jacket provides a lifetime of use
- Head is shot-filled for maximum force with no bounce effect



426-35310

ASCOT NO.	MFG. NO.	LENGTH	WEIGHT
426-35335	T335	12"	1.5 Lbs.

### PROFESSIONAL DEAD BLOW HAMMERS



426-35332

426-35337

ASCOT NO.	MFG. NO.	DESCRIPTION	LENGTH	WEIGHT
426-35331	TG331	1 lb. Head	12-1/4"	1.8 Lbs.
426-35332	TG332	2 lb. Head	13-1/2"	1.9 Lbs.
426-35333	TG333	3 lb. Head	14-1/2"	2.7 Lbs.
426-35334	TG334	4 lb. Head	15-1/2"	3.4 Lbs.
426-35337	TG337	Steel Face/Soft Face	13-1/2"	2.2 Lbs.

## Replacement Handles

### FIBERGLASS REPLACEMENT HANDLES



ASCOT NO.	MFG. NO.	FOR HAMMER NO.	LENGTH	WEIGHT
429-35206	TG31H	TG11R, TG31, TG33R	16"	1 Lb.
429-35211	TG11BH	TG11B	16"	1.3 Lbs.
429-35219	TG11CH	TG11C, TG34, TG35, TG36	18"	2.5 Lbs.
429-35218	TG11DH	TG11D	18"	1.2 Lbs.
429-35832	TG11EH	TG11E	32"	2.3 Lbs.

### ALUMINUM REPLACEMENT HANDLES



ASCOT NO.	MFG. NO.	FOR HAMMER NO.	LENGTH	WEIGHT
429-35529	T11AH	T11E, TG11E	32"	4.3 Lbs.

### HICKORY REPLACEMENT HANDLES



ASCOT NO.	MFG. NO.	FOR HAMMER NO.	LENGTH	WEIGHT
429-35111	T11BH	T11B	15"	.75 Lbs.
429-35113	T11HN	T11R, T31, T33R	15"	.75 Lbs.
429-35119	T11CH	T11C, T34, T35, T36	17"	.75 Lbs.
429-35127	T11DH	T11D	17"	.75 Lbs.
429-35129	T11EH	T11E	30"	1.2 Lbs.

### FIBERGLASS REPLACEMENT HANDLES FOR DUCK-BILLED BEAD BREAKING WEDGES

- **Handles are constructed with a solid core which has thousands of fiberglass strands and a unique resin making them super strong all-weather, chemical and insect-resistant** ▪ Ergonomic non-slip grips for slippery conditions
- *Replacement Adapters available* ▪ **MADE IN THE USA**



429-35227



429-35229

ASCOT NO.	MFG. NO.	DESCRIPTION
429-35227	TG11DH	19" Fiberglass Hammer Handle
429-35229	TG11EH	33" Fiberglass Hammer Handle





# Wrenches & Lug Wrenches

## KENTOOL PORKCHOP™ WRENCHES

▪ Holds outer cap nut on dual wheels while turning inner nut ▪ Lip fits in hole to secure wrench in place ▪ Fits standard and metric cap nuts



ASCOT NO.	MFG. NO.	DESCRIPTION	SIZE	WEIGHT
406-30609	TX9	SAE	1-1/2"	.4 Lbs.
406-30610	TX10	Metric	35mm	.4 Lbs.
406-30612	TX12	Metric	41mm	.4 Lbs.

## COMBINATION CAP NUT WRENCHES

▪ Combination wrench offers you the versatility of two wrenches in one ▪ Fit one end onto the outer cap nut with other end through center hole ▪ Slides underneath center disc of wheel reducing slipping during nut removals



ASCOT NO.	MFG. NO.	DESCRIPTION	SIZE	WEIGHT
406-30620	TX50	SAE & Metric	41mm	1.3 Lbs.

## HEAVY DUTY NUT WRENCHES

▪ Heavy duty design will not slip out of position ▪ Rests snugly against the center hole reducing the possibility of rim damage ▪ Great for aluminum rims



ASCOT NO.	MFG. NO.	DESCRIPTION	SIZE	WEIGHT
406-30618	TX200	SAE	1-1/2"	2.6 Lbs.
406-30619	TX241	Metric	41mm	2.6 Lbs.

## BUDD NUT WRENCHES

▪ New design won't slip out of rim hole ▪ Will not damage aluminum/chrome rim ▪ Holds outer cap nut securely ▪ This adaptation of an old product solves the problem of damage to wheels, as well as broken toes and injuries to the feet ▪ Model 60301 has a replaceable polymer covered tail that locks the tool securely in place



ASCOT NO.	MFG. NO.	DESCRIPTION
406-60301	60301	Budd Nut Wrench
406-60302	60302	Budd Nut Wrench - 35mm
406-60303	60303	Budd Nut Wrench - 41mm
406-60908	60908	Replaceable Polymer Tail



## BUDD NUT WRENCHES

▪ Eliminates the need for hand and foot aid in separating the nuts, therefore reducing needless injury ▪ Reduces the work and potential for back strain because there is no need to lay down the tire ▪ Will not lose its grip on the outer cap nut so there is no loss of torque, which will give the impact wrench maximum power and efficiency



The Budd Nut Wrench in use.

ASCOT NO.	MFG. NO.	DESCRIPTION
406-60300	60300	Budd Nut Wrench

## POWER WRENCH

▪ Designed for dual nut systems ▪ Has 13/16" square end to hold inner nut, with a 1-1/2" hex drive to spin outer nut off



The Budd Wheel Set in use.

ASCOT NO.	MFG. NO.	DESCRIPTION
404-34543	TR43	<b>BASIC SET INCLUDES:</b> Power Drive And Two Handles (Solid Bar - 20-1/2" Long And Tube - 20" Long)
404-34545	TR44X	<b>BUDD WHEEL SET INCLUDES:</b> Power Drive, One Bar, One Tube Handle, A 3/4" Service Adapter And One 13/16" Square Adapter
404-34547	TR44SW	<b>UNIVERSAL SET INCLUDES:</b> Power Drive, One 20-1/2" Bar, One 36" Tube Handle, A 3/4" Service Adapter, A 13/16" Square Adapter, And Six 3/4" Impact Sockets (7/8", 15/16", 1-1/16", 1-1/8", 1-3/16", 1-1/2")

## Wrenches & Lug Wrenches (cont.)

### DOUBLE END TRUCK WRENCHES

- Double end truck wrenches for on-the-road service
- Sizes available for all standard lug nuts
- Constructed from 1" high quality steel for greatest strength and durability
- All will take our standard TR5 (ASCOT Order No. 405-32318) leverage handle
- HANDLE HEX OPENING: 3/4"
- LENGTH: 16"
- WEIGHT: 4-1/2 Lbs.



ASCOT NO.	MFG. NO.	SOCKET SIZE	WEIGHT
<b>SAE</b>			
405-32501	TR1	1-1/8", 13/16" Square, 1-1/2"	4.6 Lbs.
405-32502	TR2	1, 1-1/4", 5/8" Square	4.3 Lbs.
405-32504	TR2X	15/16", 7/8"	4.5 Lbs.
405-32503	TR3	7/8", 1-1/16"	4.5 Lbs.
405-32505	TR3A	1-1/8", 1-1/16"	4.5 Lbs.
405-32506	TR3X	1-1/16", 1-3/16"	4.5 Lbs.
405-32509	TR9	1-1/4", 1-1/16"	4.5 Lbs.
405-32508	TR98	1-1/2", 13/16" Square	4.5 Lbs.
<b>METRIC</b>			
405-32551	TRM1	35mm Sq. x 17mm Square	4.5 Lbs.
405-32552	TRM2	24mm x 33mm	4.4 Lbs.
405-32553	TRM3	27mm x 30mm	4.5 Lbs.
405-32556	TRM6	41mm x 21mm Square	4.5 Lbs.
405-32557	TRM7	33mm x 30mm Square	4.5 Lbs.

### HEAVY DUTY TRUCK FOUR-WAY LUG WRENCHES

- Drop-forged center
- APPLICATIONS: Heavy duty truck, bus, tractor four-way
- Center hole for leverage bar
- T96 with heavy duty solid center



403-35595



403-35695



403-35696



403-35697



### HEAVY DUTY TRUCK WRENCHES

- Use for off-the-road Budd-type wheels
- Use TR11 handle



405-34401

ASCOT NO.	MFG. NO.	LENGTH	STOCK	WEIGHT
405-34401	TR10	29-1/2"	1-3/4" Hex x 15/16" Square	12.2 Lbs.
402-34402	TR11	30"	1-1/4"	6.5 Lbs.

### DUAL WHEEL LUG STUD REMOVER

- Special self-tapping splines provide maximum grip to remove stripped lug studs
- Use with TR1 and TR98 truck wrenches
- Also used with open end wrench
- Use with soft-faced hammer



492-30165

ASCOT NO.	MFG. NO.	DESCRIPTION	WEIGHT
492-30165	30165	Fits 13/16" Sq. Inner Nut	1 Lb.

ASCOT NO.	MFG. NO.	LENGTH	STOCK	SOCKET SIZE	WEIGHT
403-35595	TC95	27-1/2"	1"	1-1/2", 13/16" Sq., 30, 33mm	14.2 Lbs.
403-35695	T95	27-1/2"	1"	1-1/16", 1-1/4", 1-1/2", 13/16" Sq.	13.8 Lbs.
403-35696	T96	27-1/2"	1"	1-1/16", 1-1/4", 1-1/2", 13/16" Sq.	13.5 Lbs.
403-35697	T95A	27-1/2"	1"	1-1/4", 1-1/2", 13/16" Sq., 3/4" Service Arm (will take any standard 3/4" drive socket)	13.5 Lbs.
403-35795	TM95	27-1/2"	1"	24, 27, 30, 33mm	13.5 Lbs.

TIRE & WHEEL SERVICE // TIRE SERVICING TOOLS



➔ Porkchop™ Wrenches, Nut Wrenches, Power Wrenches

### PROFESSIONAL LUG WRENCHES

▪ Most popular 4-way lug wrench, polished sockets ▪ APPLICATIONS: For passenger cars



4-WAY WITH POLISHED SOCKETS

MOST POPULAR

ASCOT NO.	MFG. NO.	LENGTH	STOCK	SOCKET SIZE	WEIGHT
403-35656	T56	20"	5/8"	17, 19, 21, 22mm	4 Lbs.
403-35657	T57	23"	5/8"	3/4", 13/16", 7/8", 15/16"	4-1/2 Lbs.

### STANDARD LUG WRENCHES

▪ Welded center construction for strength and durability ▪ Premium grade, special bar quantity steel for extra strength ▪ APPLICATIONS: T59 series for passenger cars and T90 series for light truck



WELDED CENTER

ASCOT NO.	MFG. NO.	LENGTH	STOCK	SOCKET SIZE	WEIGHT
403-35659	T59	22"	5/8"	3/4", 13/16", 7/8", 15/16"	4.5 Lbs.
405-35690	T90	25"	3/4"	7/8", 15/16", 1", 1-1/16"	7.2 Lbs.

### ECONOMY LUG WRENCHES

▪ Designed with welded centers which stand up to everyday use ▪ APPLICATIONS: For passenger cars



WELDED CENTER

ASCOT NO.	MFG. NO.	LENGTH	STOCK	SOCKET SIZE	WEIGHT
403-35620	T9520	20"	9/16"	3/4", 13/16", 7/8", 17mm	3.4 Lbs.
403-35661	T61	22"	9/16"	3/4", 13/16", 7/8", 17mm	3.8 Lbs.
403-35662	T62	18"	9/16"	3/4", 13/16", 7/8", 17mm	3.2 Lbs.
403-35663	T63	18"	9/16"	17, 19, 21, 22mm	3.2 Lbs.

# Shop Service Tools

### WHEEL COVER PULLERS/REPLACERS

▪ Remove wheel covers quickly and easily without gouging or scratching ▪ Rubber head T11RH prevents damage to hubcap and is replaceable

RUBBER HEAD



ASCOT NO.	MFG. NO.	LENGTH	STOCK	WEIGHT
402-31567	T67	17-1/2"	9/16"	1.8 Lbs.
402-31568	T68	14"	7/16"	1.3 Lbs.

### CENTER CAP REMOVERS



ASCOT NO.	MFG. NO.	LENGTH	STOCK	WEIGHT
402-31565	T65	7-3/4"	5/16"	.2 Lbs.
402-31566	T66	7-3/4"	5/16"	.2 Lbs.

TIRE & WHEEL SERVICE // TIRE SERVICING TOOLS



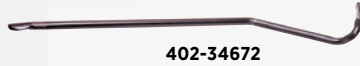
→ Tire Snakes, Dual Wheel Separator, Tire Changers



## Shop Service Tools (cont.)

### SMALL TIRE SNAKE

▪ Included with T600 Tire Changer



402-34672

ASCOT NO.	MFG. NO.	LENGTH	STOCK	WEIGHT
402-34672	34672	22"	5/8"	2 Lbs.

### MEDIUM TIRE SNAKE

▪ Included with T601 Tire Changer  
 ▪ **APPLICATIONS:** Designed for wheels from 4" to 13" ▪ Longer length provides greater strength



402-34674

ASCOT NO.	MFG. NO.	LENGTH	STOCK	WEIGHT
402-34674	34674	28"	5/8"	2.5 Lbs.

### LARGE TIRE SNAKE

▪ Included with T600 Tire Changer



402-34678

ASCOT NO.	MFG. NO.	LENGTH	STOCK	WEIGHT
402-34678	34678	40"	3/4"	5.3 Lbs.

### DUAL WHEEL SEPARATOR

▪ **Makes removing stuck or frozen dual steel wheels quick and easy** ▪ **APPLICATIONS:** Ideal for use on nearly any truck, bus, van or trailer that has dual steel wheels ▪ Innovative "One-piece" Pusher won't fall apart during use ▪ Pusher is ball bearing-driven for near-zero turning resistance ▪ Pusher is heat treated for long-lasting strength and durability ▪ Forcing Screw and Pullers have powerful ▪ 1-1/8" diameter x 11 threads for years of reliable service ▪ Includes two pullers to cover large and small dual wheel applications ▪ Components have black oxide or bright nickel plating finish for rust and corrosion resistance ▪ Use with air impact wrench ▪ Components are laser-etched for easy identification ▪ Comes in a sturdy, compact, easy-to-store case ▪ **WEIGHT:** 6.5" x 9.5" x 2.5", 5.3 lbs. ▪ **MADE IN USA**



The Dual Wheel Separator in use.

ASCOT NO.	MFG. NO.	DESCRIPTION
422-34549	34549	Dual Wheel Separator

### FLOOR MOUNT MANUAL TIRE CHANGER

▪ **APPLICATIONS:** Mounts and demounts a full range of tires on rim diameters from 4" to 15" ▪ Tapered bearing guide positively centers straight shaft hubs of all diameters ▪ Built-in adjustable bead breaker works on rims up to 13" in diameters and 24" in width without disassembly ▪ Includes a 28" tire snake mount/demount tool



441-38601

ASCOT NO.	MFG. NO.	HEIGHT	WEIGHT
441-38601	T601	32"	31 Lbs.

### BENCH MOUNT RIM-CLAMP MANUAL TIRE CHANGER

▪ **APPLICATIONS:** Mounts and demounts a full range of tires on rim diameters from 4" to 12" ▪ Mounts easily to a bench or in any standard, four-position rim-clamp tire changer ▪ Built-in, three-fin centering device mounts standard lug-type rims with 2" and larger center hole ▪ Square base prevents turning in the changer during use ▪ Includes a 22" tire snake mount/demount tool



441-38600

ASCOT NO.	MFG. NO.	HEIGHT	WEIGHT
441-38600	T600	16.5"	21.7 Lbs.



### MULTI TIRE CHANGER

▪ **APPLICATIONS:** For changing small tires and wheels  
 ▪ **INCLUDES:** Everything needed to change 4" to 16.5" tires including rim ▪ Rim clamp mechanism ▪ 2 center posts (for open or hub type wheels and bearing type wheels) ▪ Also includes the CH-4 Mongoose tire tool ▪ Can be mounted on a bench, tire stand or tire changer



441-00220

ASCOT NO.	MFG. NO.	HEIGHT	WEIGHT
441-00220	CH-22	Multi-Tire Changer	23 Lbs.
441-00230	CH-23	Tire Stand	70 Lbs.





# Automatic Tire Inflation Systems

All systems feature an operating range of 5-145 PSI, accurate within .3 PSI. Units are housed in weather resistant aluminum casings. All provide an easy to use and affordable way to assure precise inflation. Units available with 110 volt AC electric or battery hook up. Optional heater available for outdoor units.

## MULTIPLE TIRE INFLATOR

- For Fleet Operations, Service Centers, or Mounters
- APPLICATIONS: For 19.5" and larger rims
- Capable of inflating four 22.5" tires from 5 to 100 PSI in 5 minutes



ASCOT NO.	MFG. NO.	DESCRIPTION
475-89003	89 XDB	Multiple Tire Inflation System

475-89003

## MULTIPLE TIRE INFLATION HOSES & ACCESSORIES



478-00360

ASCOT NO.	MFG. NO.	DESCRIPTION
475-00891	89HKC-LM	Straight Hose w/ CH-360S Air Chuck
475-00892	89HKT-LM	Straight Hose w/Coupler & CH-330-LO Air Chuck
475-00893	89HK1-25	Straight Hose w/Coupler & IN-20 Tool (Single Tire)
475-00894	89-HMVN	4-Way Manifold
475-00895	89-3W	Air Flow Control Valve
475-00896	SVL-STD	4' Mounting Steel Swivel Stand
478-00360	CH-360S	Chip-On Style Air Chuck (Closed) w/Spring
478-03300	CH-330-LO	Lock-On Style Air Chuck (Dual Wheels)

Specify Hose length when ordering. Components available separately.

## SINGLE TIRE INFLATOR

- For Dealerships, Rental Facilities, Service Centers and Quick Lubes



ASCOT NO.	MFG. NO.	DESCRIPTION
475-89001	89 XDA	Single Tire Inflation System

475-89001

## SINGLE TIRE INFLATION HOSES & ACCESSORIES



475-01898



478-00820

ASCOT NO.	MFG. NO.	DESCRIPTION
475-00896	SVL-STD	4' Mounting Steel Swivel Stand
475-01892	89HKC-L	Straight Hose w/Coupler & CH3600P Chuck
475-01893	89HKC-LC	Coil Hose w/ Coupler and CH-3600P Chuck
475-01894	89HKT-L	Straight Hose w/Coupler & CH 330-LO-OP Chuck
475-01895	89HK1-25	Straight Hose w/Coupler & IN-20 Tool
475-01896	89-2 WASV	2 Way Automatic Switching Valve (2 Hoses)
475-01897	89-3 WASV	3 Way Automatic Switching Valve (3 Hoses)
475-01898	89-3 WTK	3 Way Automatic Switching Valve Kit
478-00820	IN20	Core Removal and Inflation Tire Chuck

Specify Hose length when ordering. Components available separately.

## OVER INFLATION & HIGH VOLUME

- For Retreaders, Fleets or Mounters
- Inflate single or multiple tires to a preset over-pressure setting
- Unit then performs a leak test for "zipper leaks"
- Deflates to final preset required PSI setting
- Features 3 preset PSI settings



475-89004

ASCOT NO.	MFG. NO.	DESCRIPTION
475-89004	89 XDZ	Over Inflation & High Volume System

## MOBILE INFLATION SYSTEM

- Nitrogen or air
- Trolley design provides mobility
- Nitrogen service will purge the air out of any size tire, re-inflate with nitrogen, while maintaining .3 PSI accuracy
- Designate the number of purge cycles needed to obtain the benefits of nitrogen



NITROGEN OR AIR



475-89106

ASCOT NO.	MFG. NO.	DESCRIPTION
475-89106	89 TRL-6B	Mobile Inflation System

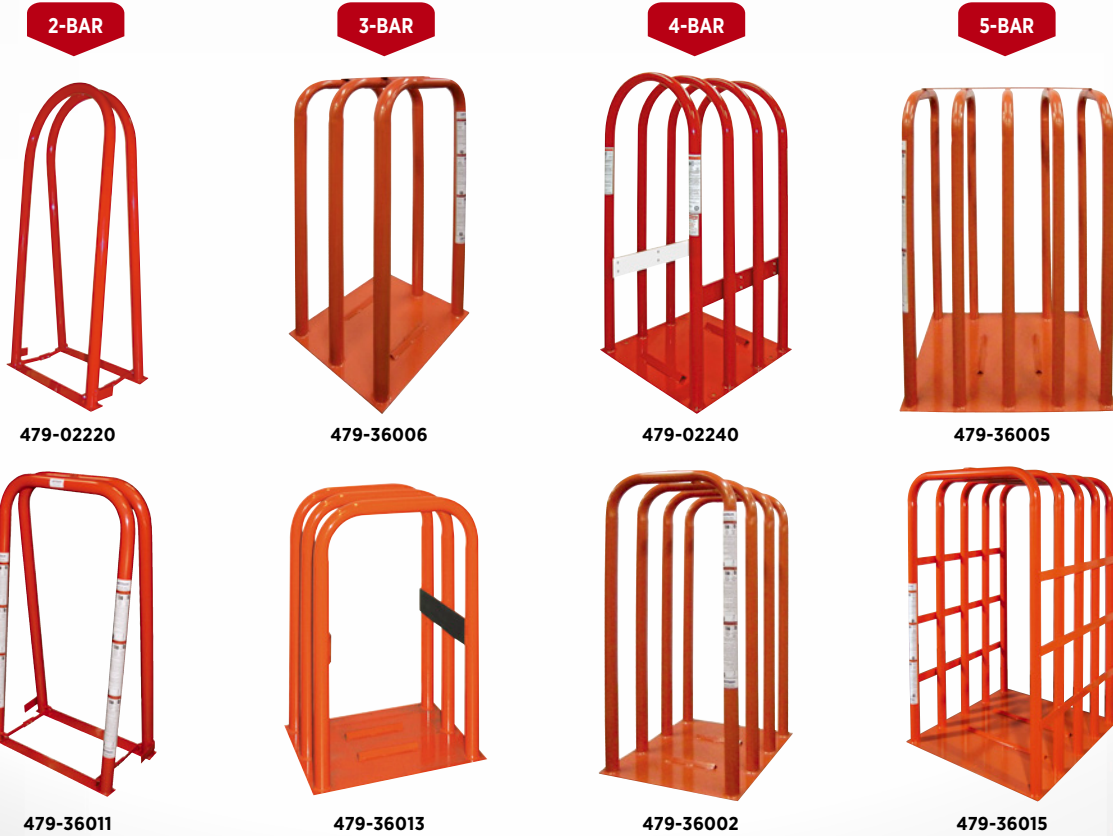
➔ 2-Bar, 3-Bar, 4-Bar and 5-Bar Safety Inflation Cages



# Safety Inflation Cages

A safety inflation cage is mandatory in any shop for tubeless and multi-piece rims. Ascot offers a size and design for all your needs. Constructed of heavy gauge steel welded to a steel base. Guards against blown lock rings, exploding rims and ruptured tire explosions when used properly. These cages meet OSHA safety requirements (29-CFR Part 1910.177).

TIRE & WHEEL SERVICE // SAFETY INFLATION CAGES



ASCOT NO.	MFG. NO.	DESCRIPTION	HANDLES TIRES	BASE PLATE	INSIDE HEIGHT	INSIDE DIMENSIONS	WEIGHT
<b>2-BAR SAFETY INFLATION CAGES</b>							
479-02220	2220	Portable 2-Bar Safety Cage	Up to 22"	—	—	—	70 Lbs.
479-36001	MIC-2	Portable 2-Bar Safety Cage	12" - 24"	6" x 21-1/2"	54"	41" H x 16" W	60 Lbs.
479-36011	MIC-2WB	Portable 2-Bar Safety Cage (Super Single)	12" - 24"	-	43"	-	70 Lbs.
479-36201	MIC-2G	Galvanized Portable 2-Bar Safety Cage	12" - 24"	-	43"	-	
479-36211	MIC-2WBG	Galvanized Portable 2-Bar Safety Cage (Super Single)	12" - 24"	-	43"	-	
<b>3-BAR SAFETY INFLATION CAGES</b>							
479-36006	MIC-3	3-Bar Safety Cage	14" - 24"	26" x 22"	43-1/2"	43-1/2" H x 20-1/2" W	134 Lbs.
479-36013	MIC-3SUV	3-Bar Passenger-SUV Safety Cage	Up to 20"	20-1/4" x 27-3/4"	37-3/32"	27-3/32" H x 20-1/4" W	110 Lbs.
<b>4-BAR SAFETY INFLATION CAGES</b>							
479-02240	2240NM	4-Bar Safety Cage with No Mar Coating	Up to 21.5"	—	—	—	170 Lbs.
479-36002	MIC-4	4-Bar Safety Cage (Super Single)	—	31-1/2" x 26"	43-1/2"	43-1/2" H x 20-1/2" W	146 Lbs.
<b>5-BAR SAFETY INFLATION CAGES</b>							
479-36005	MIC-5	5-Bar Safety Cage	—	41" x 26"	43-1/2"	43-1/2" H x 20-1/2" W	182 Lbs.
479-36015	MIC-OTR	5-Bar Safety Cage	39-3/8" x 41"	39-3/8" x 41"	63-15/16"	39-3/8" H x 63-15/16" W	310 Lbs.



Work safely. Always use an inflation cage when inflating tires. Follow OSHA regulation 29-CFR Part 1910.177 whenever changing tires.



➔ 2-Bar, 3-Bar, 4-Bar, 5-Bar and 6-Bar Safety Inflation Cages

# Ken-Tool® Safety Inflation Cages

A safety inflation cage is mandatory in any shop for tubeless and multi-piece rims. Ascot offers a size and design for all your needs. Constructed of heavy gauge steel welded to a steel base. Guards against blown lock rings, exploding rims and ruptured tire explosions when used properly. These cages meet OSHA safety requirements (29-CFR Part 1910.177). Designed to meet OSHA regulation requirements for medium, heavy duty truck, OTR, tractor & Super Singles.



TIRE & WHEEL SERVICE // SAFETY INFLATION CAGES

ASCOT NO.	MFG. NO.	DESCRIPTION	HANDLES TIRES	BASE PLATE	INSIDE HEIGHT	INSIDE DIMENSIONS	WEIGHT
<b>2-BAR SAFETY INFLATION CAGES</b>							
479-46001	36001	2-Bar Safety Cage	—	7" x 21-1/2"	41"	41" H x 16" W	60 Lbs.
479-46011	36007	2-Bar Wide Base Safety Cage	—	7" x 27"	43.5"	43.5" H x 20.5" W	72 Lbs.
<b>3-BAR SAFETY INFLATION CAGES</b>							
479-02130	2130	3-Bar Passenger/Light Truck Cage	Up to 27"	—	—	—	100 Lbs.
479-36003	T103	3-Bar Safety Cage/Light Truck Cage	—	21-1/2" x 22"	30"	30" H x 16" W	80 Lbs.
479-36004	T104	3-Bar Safety Cage for Off Road	—	30" x 27"	65"	65" H x 24" W	158 Lbs.
479-46006	36006	3-Bar Tire Inflation Cage	—	31.5" x 26"	43.5"	43.5" H x 20.5" W	146 Lbs.
<b>4-BAR SAFETY INFLATION CAGES</b>							
479-46002	36002	4-Bar Safety Cage	—	31.5" x 26"	43.5"	43.5" H x 20.5" W	146 Lbs.
<b>5-BAR SAFETY INFLATION CAGES</b>							
479-46005	36005	5-Bar Safety Cage	—	41" x 26"	43.5"	43.5" H x 20.5" W	182 Lbs.
479-46010	36010	5-Bar Super Magnum	—	48" x 30"	41.5"	41.5" H x 24" W	248 Lbs.
<b>6-BAR SAFETY INFLATION CAGES</b>							
479-02260	2260	6-Bar Safety Cage	14"- 24" or 54" Super Single	—	—	—	275 Lbs.



Work safely. Always use an inflation cage when inflating tires. Follow OSHA regulation 29-CFR Part 1910.177 whenever changing tires.

→ Earthmover Inflation Cage, Heavy Duty Inflation Chamber

## Safety Inflation Cages (cont.)



### EARTHMOVER TIRE INFLATION CAGE



- **APPLICATIONS:** For large Earthmover & Agricultural tires
- New design with 10-bar construction
- Fits up to 29.5R25 L-3 Earthmover
- For maximum tire inflation pressure up to 100-psi
- **CAGE DIMENSIONS:** 48" x 72" x 89"
- Ships on skid
- **PROUDLY MADE IN USA**
- Designed to meet OSHA reg. 29-CFR Part 1910.177



479-46111

### HEAVY DUTY INFLATION CHAMBER

- **Fast accurate inflation using pressure limiter**
- Liquid filled pressure gauges
- Automatic shut-off when desired pressure is reached
- Bleed valve for releasing air in the tire if defect is found while inflating
- Complies with federal law covering the service of single or multi-piece wheels
- **MAX. TIRE DIAMETER: 51"; MAX. TIRE WIDTH: 23"**



479-06160

ASCOT NO.	MFG. NO.	DESCRIPTION
479-46111	T111	Earthmover Tire Inflation Cage

ASCOT NO.	MFG. NO.	DESCRIPTION
479-06160	6160	Heavy Duty Inflation Chamber



Work safely. Always use an inflation cage when inflating tires. Follow OSHA regulation 29-CFR Part 1910.177 whenever changing tires.

➔ Truck Tire Changing Stand, EZ Tire Rotator, Roller for Inflation Cages, Tire Cage Stand



TRUCK TIRE CHANGING STAND

- **APPLICATIONS:** Handles wheels or open rims 16.5" to 24" ▪ Double-slide adjustment with locking device prevents twisting so it stays aligned with the wheel or rim
- Ideal height for driving off beads or demounting tire



479-36115

ASCOT NO.	MFG. NO.	DESCRIPTION
479-36115	T115	Truck Tire Changing Stand

EZ TIRE ROTATOR FOR INFLATION CAGES

- **APPLICATIONS:** EZ Tire Rotator fits any Ken-Tool 3-Bar, 4-Bar and 5-Bar Inflation Cage, plus many competitive cages ▪ No need to lift or remove rim/wheel assembly from cage when repositioning valve stem for access through the cage tubes ▪ Allows tire tech to easily and quickly rotate rim/wheel assembly inside the safety cage in order to adjust position of valve stem ▪ Reduces handling, back strain and user fatigue; increases safety ▪ Easily installed or moved to another cage - no fastening required ▪ No assembly required; simply place in the center of the cage ▪ Features heavy-duty 2" ball-bearing steel rollers and 3/4" thick steel stock for long service
- Boxed and UPS shippable
- **MADE IN USA**



479-36014

ASCOT NO.	MFG. NO.	DESCRIPTION
479-36014	T114	EZ Tire Rotator for Inflation Cages

ROLLER FOR TIRE INFLATION CAGES

- **Used to roll the tires easily directly into the inflation cage**
- Allows an easy access to the tire valve because it is easy to turn the tire to have the valve to any position ▪ For use with all 3-bar, 4-bar & 5-bar inflation cages ▪ Prevent back injuries when handling heavy tires ▪ **WEIGHT:** 12 lbs.



479-36111

ASCOT NO.	MFG. NO.	DESCRIPTION
479-36111	MIC-ROLLER	Roller for Tire Inflation Cages

TIRE CAGE STAND FOR AUTOMATIC INFLATORS

- **Used to support automatic inflators to tire inflation cages**
- Reduces movement of automatic and allows for faster inflation of tires ▪ *Install directly on the top of one of the inflation cage bars with the mounting bracket* ▪ **WEIGHT:** 8 lbs.



479-36112

ASCOT NO.	MFG. NO.	DESCRIPTION
479-36112	MW-STAND	Tire Cage Stand for Automatic Inflators

TIRE & WHEEL SERVICE // SAFETY INFLATION CAGES





**NEWER.  
FASTER.  
STRONGER.**

# **VIPER**

US PATENT NO 6,179,033

*Next Generation in Bead Seaters*



TIRE SERVICE EQUIPMENT MFG. CO. INC.  
SAF-TEE SIPING & GROOVING INC.

800.223.4540 | [www.tsissg.com](http://www.tsissg.com)